

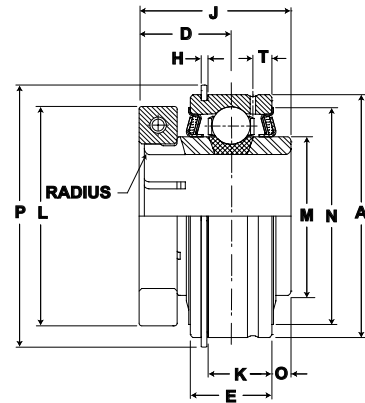
Performance Cylindrical OD Bearings (ER)



Mkt. Ball Bearings



- Duty:** Standard
- Rolling Elements:** Ball
- Housing:** Cylindrical OD Insert
- Lock:** SKWEZLOC Locking Collar
- Seal:** Felt
- Optional Seal:** Contact
- Temperature:** -20° to 220°F
- Relube:** Relube Through Outer Ring Groove



ER-T Cylindrical O.D. Bearing - SKWEZLOC Locking Collar - Inch

Bore Diameter inch	Bearing Insert No.	Basic Dynamic Rating lb/N	Dimensions inch / mm													Max. Rad. To Clear	Unit Wt. lb/kg
			A	D	E	H	J	K	L	M	N	O	P	T			
3/4	ER-12T	2611	1.8504	7/8	5/8	3/64	1 9/32	31/64	1 3/4	1 3/16	1 5/8	.094	2 1/16	1/8	.04	.25	
		11614	47.0	19.8	15.9	1.2	32.5	12.3	44.5	30.2	41.3	2.39	52.4	3.2	1.02		
1	ER-16T	2801	2.0472	59/64	3/4	3/64	1 7/16	39/64	1 15/16	1 3/8	1 27/32	.135	2 17/64	13/64	.04	.68	
		12459	52.0	22.1	19.1	1.2	36.5	15.5	49.2	34.9	46.8	3.43	57.5	5.2	1.02		
1 1/8	ER-18T	4381	2.4409	15/16	7/8	1/16	1 9/16	11/16	2 3/16	1 19/32	2 5/32	.188	2 21/32	7/32	.04	.93	
		19487	62.0	23.8	22.2	1.6	39.7	17.5	55.6	40.5	54.8	4.78	67.5	5.6	1.02		
1 1/4	ER-20T	5782	2.8346	1 1/16	15/16	1/16	1 3/4	3/4	2 7/16	1 55/64	2 17/32	.219	3 5/64	7/32	.04	1.37	
		25718	72.0	27.0	23.8	1.6	44.5	19.1	61.9	47.2	64.3	5.56	78.2	5.6	1.02		
1 3/8	ER-22T	5782	2.8346	1 1/16	15/16	1/16	1 3/4	3/4	2 9/16	1 55/64	2 17/32	.219	3 5/64	7/32	.04	1.37	
		25718	72.0	27.0	23.8	1.6	44.5	19.1	65.1	47.2	64.3	5.56	78.2	5.6	1.02		
1 1/2	ER-24T	7340	3.1496	1 1/4	1 3/32	1/16	2	29/32	2 11/16	2 1/16	2 53/64	.203	3 13/32	1/4	.06	2.00	
		32648	80.0	31.8	27.8	1.6	50.8	23.0	68.3	52.4	71.8	5.16	86.5	6.4	1.57		
1 5/8	ER-26T	7901	3.3465	1 1/4	1 3/32	1/16	2	29/32	2 13/16	2 19/64	3 1/32	.203	3 19/32	1/4	.06	2.31	
		35144	85.0	31.8	27.8	1.6	50.8	23.0	71.4	58.3	77.0	5.16	91.3	6.4	1.57		
1 11/16	ER-27T	7901	3.3465	1 1/4	1 3/32	1/16	2	29/32	2 15/16	2 19/64	3 1/32	.203	3 19/32	1/4	.06	2.31	
		35144	85.0	31.8	27.8	1.6	50.8	23.0	74.6	58.3	77.0	5.16	91.3	6.4	1.57		
1 3/4	ER-28T	7889	3.5433	1 1/8	1 1/8	3/32	2 3/32	29/32	3 3/8	2 15/32	3 7/32	.188	3 25/32	19/64	.06	2.43	
		35090	90.0	34.1	28.6	2.4	53.2	23.0	85.7	62.7	81.8	4.78	96.0	7.5	1.57		
2	ER-32T	9752	3.9370	1 3/8	1 3/16	3/32	2 1/4	31/32	3 1/2	2 23/32	3 9/16	.281	4 3/16	19/64	.08	3.00	
		43377	100.0	34.9	30.2	2.4	57.2	24.6	88.9	69.1	90.5	7.14	106.4	7.5	2.03		
2 3/16	ER-35T	9752	3.9370	1 3/8	1 3/16	3/32	2 1/4	31/32	3 5/8	2 23/32	3 9/16	.281	4 3/16	19/64	.08	3.00	
		43377	100.0	34.9	30.2	2.4	57.2	24.6	92.1	69.1	90.5	7.14	106.4	7.5	2.03		
2 1/4	ER-36T	11789	4.3307	1 5/8	1 1/4	3/32	2 5/8	1 1/32	4 1/16	2 63/64	3 29/32	.375	4 37/64	19/64	.08	4.00	
		52437	110.0	41.3	31.8	2.4	66.7	26.2	103.2	75.8	99.2	9.53	116.3	7.5	2.03		
2 3/8	ER-38T	11789	4.3307	1 5/8	1 1/4	3/32	2 5/8	1 1/32	4 1/8	2 63/64	3 29/32	.375	4 37/64	19/64	.08	4.00	
		52437	110.0	41.3	31.8	2.4	66.7	26.2	104.8	75.8	99.2	9.53	116.3	7.5	2.03		
2 7/16	ER-39T	52437	110.0	41.3	31.8	2.4	66.7	26.2	104.8	75.8	99.2	9.53	116.3	7.5	2.03	1.81	

ER-T Cylindrical O.D. Bearing - SKWEZLOC Locking Collar - Metric - SKWEZ™

Bore Diameter mm	Bearing Insert No.	Basic Dynamic Rating N/lb	Dimensions mm / inch													Max. Rad. To Clear	Unit Wt. kg/lb
			A	D	E	L	H	J	K	M	N	O	P	T			
20	ER-204TMC	11614	47.0	19.8	15.9	44.5	1.2	32.5	12.3	30.2	41.3	2.39	52.4	3.2	1.02	.25	
		2611	1.8504	7/8	5/8	1 3/4	3/64	1 9/32	31/64	1 3/16	1 5/8	.094	2 1/16	1/8	.04		
25	ER-205TMC	12459	52.0	22.1	19.1	49.2	1.2	36.5	15.5	34.9	46.8	3.43	57.5	5.2	1.02	.31	
		2801	2.0472	59/64	3/4	1 15/16	3/64	1 7/16	39/64	1 3/8	1 27/32	.135	2 17/64	13/64	.04		
30	ER-206TMC	19487	62.0	23.8	22.2	55.6	1.6	39.7	17.5	40.5	54.8	4.75	67.5	5.6	1.02	.42	
		4381	2.4409	15/16	7/8	2 3/16	1/16	1 9/16	11/16	1 19/32	2 5/32	.187	2 21/32	7/32	.04		
35	ER-207TMC	25718	72.0	27.0	23.8	65.1	1.6	44.5	19.1	47.2	64.3	5.56	78.2	5.6	1.02	.62	
		5782	2.8346	1 1/16	15/16	1/16	1 3/4	3/4	1 55/64	2 17/32	.219	3 5/64	7/32	.04			
40	ER-208TMC	32648	80.0	31.8	27.8	68.3	1.6	50.8	23.0	52.4	71.8	4.76	86.5	6.4	1.57	.91	
		7340	3.1496	1 1/4	1 3/32	1/16	2	29/32	2 11/16	2 53/64	.188	3 13/32	1/4	.06			
45	ER-209TMC	35144	85.0	31.8	27.8	74.6	1.6	50.8	23.0	58.3	77.0	4.76	91.3	6.4	1.57	1.05	
		7901	3.3465	1 1/4	1 3/32	1/16	2	29/32	2 19/64	3 1/32	.188	3 19/32	1/4	.06			
50	ER-210TMC	35090	90.0	34.1	28.6	85.7	2.4	53.2	23.0	62.7	81.8	4.78	96.0	7.5	1.57	1.10	
		7889	3.5433	1 11/32	1 1/8	3 3/8	3/32	2 3/32	29/32	2 15/32	3 7/32	.188	3 25/32	19/64	.06		
55	ER-211TMC	43377	100.0	34.9	30.2	92.1	2.4	57.2	24.6	69.1	90.5	7.14	106.4	7.5	2.03	1.36	
		9752	3.9370	1 3/8	1 3/16	3 5/8	3/32	2 1/4	31/32	2 23/32	3 9/16	.281	4 3/16	19/64	.08		
60	ER-212TMC	52437	110.0	41.3	31.8	104.8	2.4	66.7	26.2	75.8	99.2	9.53	116.3	7.5	2.03	1.81	
		11789	4.3307	1 5/8	1 1/4	4 1/8	3/32	2 5/8	1 1/32	2 63/64	3 29/32	.375	4 37/64	19/64	.08		

For Housing fit guidelines see page G-259.