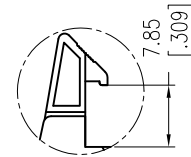
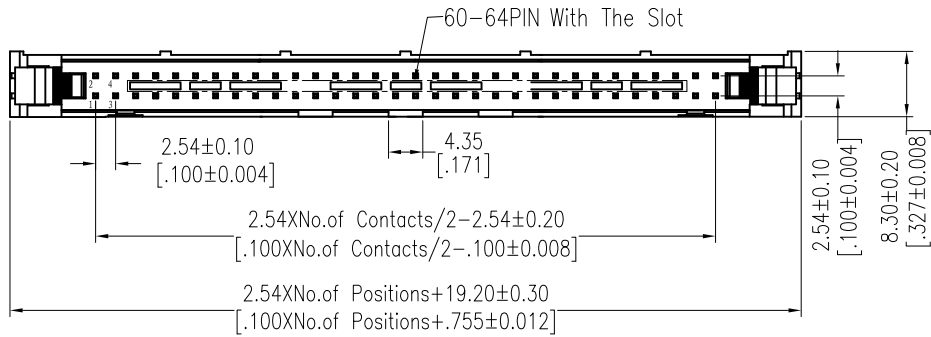
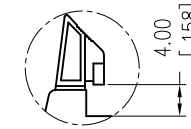


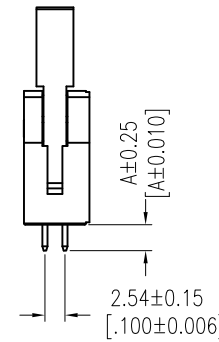
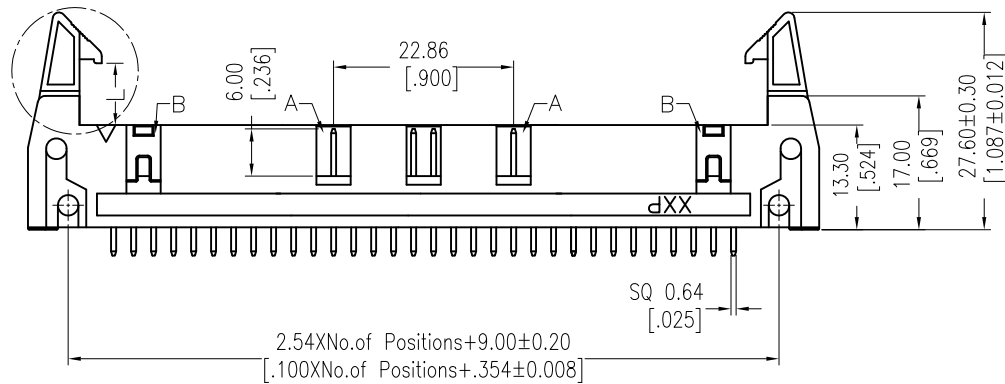
Lat-Con, Series 050, 180° Male Header, different Latch Options, grey



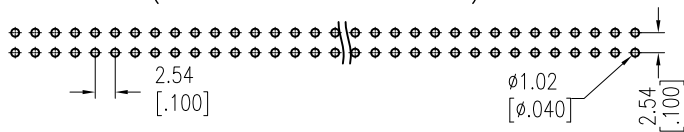
Long Latch



Short Latch



Recommended P.C.B Layout(Top Side)
(PCB BOARD TOLERANCE±0.05)



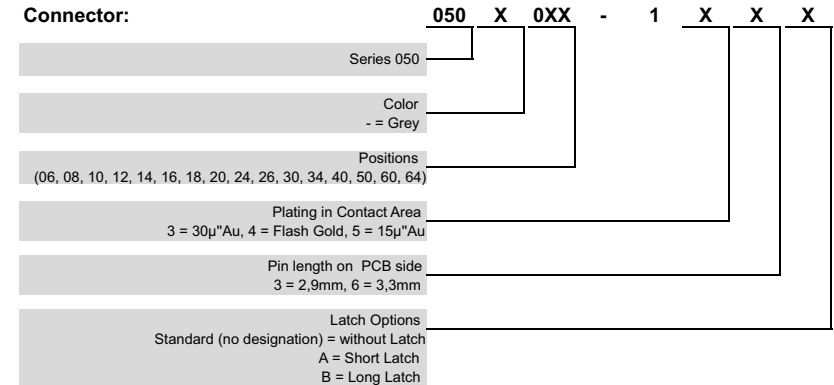
NOTES:
 Current Rating: 3,0 AMP
 Contact Resistance: 20mΩ max.
 Withstand Voltage: 1000V AC/DC
 Insulation Resistance: 1000MΩ min.
 Operation Temperature: -40°C to +105°C

Contact Material: Copper Alloy
 Contact Plating: Sn over Ni (Au on request)
 Insulator Material: PA9T GF (UL94 V-0)

OPERATION		
X.X	±0.40	
X.XX	±0.25	
X.XXX	±0.15	
Angle	± 3°	
DIM	TOL	

Positions	Feature A	Feature B
6 - 18		
20 - 58		x
60 - 64	x	x

Connector:



REV	DATE	NOTE	NAME
2	25.01.2022	Revised	PER
1	22.04.2021	issued	JAL