

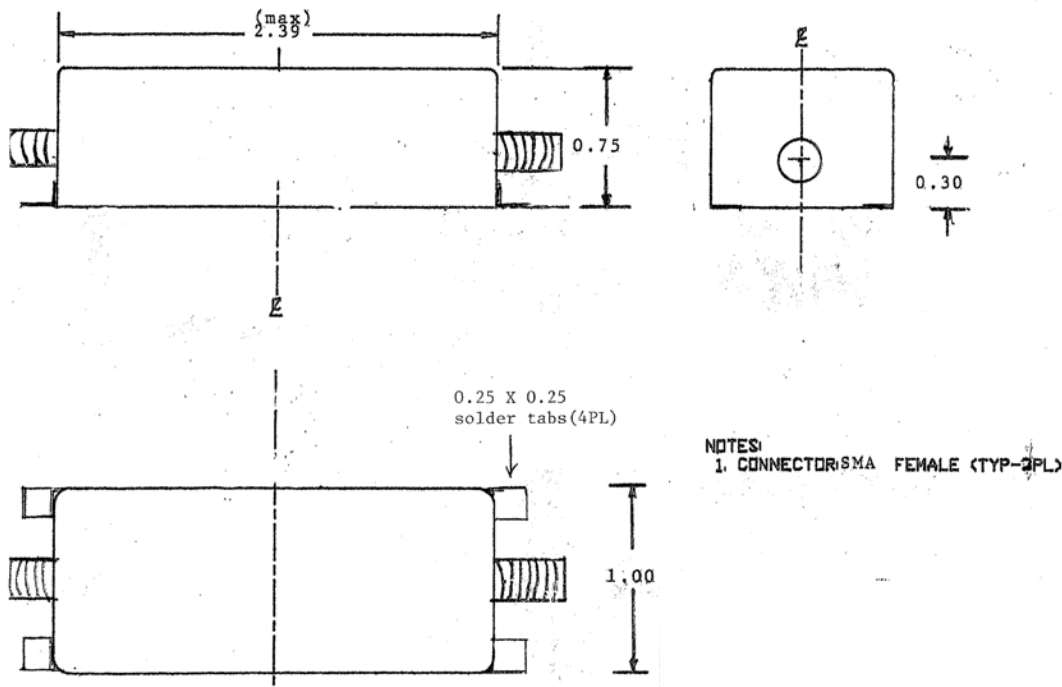


10 MHz Crystal Filter

P/N: AM10CR283

Center Frequency: 10 MHz
Min 3db= CF+/-5 KHz
60 db CF +/-100 KHz
Maintain 60db to 1.5 GHz
Insertion loss at CF: 2 db max
Return Loss at CF: 15 dB min
Impedance: 50ohms
Prototype Temp Range: 0°C to 55°C
Production temp range: -40°C to +85°C
Max power level: 10mW

Dimensions:





10 MHz Crystal Filter

P/N: AM10CR283

