

PLS-092A-6PPH

PLS-092A-6PPH

Horizontal Level Sensor



Electrical Characteristics @ 25 °C

Contact form		A
Contact rating max.	W / VA	50
Switching voltage max.	VDC	200
	VAC	250
Switching current max.	A	1.5
Carry current max.	A	2
Breakdown voltage min.	VDC	400
Total resistance max.	mΩ	200

Environmental Characteristics

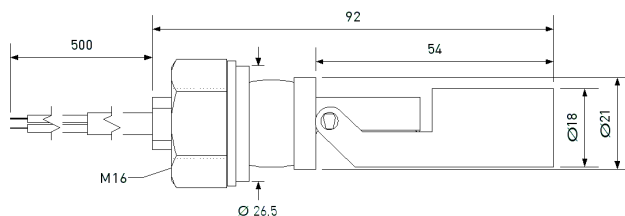
Operating temperature	°C	-20 to +65
Storage temperature	°C	-20 to +65

Mechanical Characteristics

Density of float typ.*	g / cm ³	0.7
Recommended minimum gravity of medium	g / cm ³	Density of float + 20%

* in delivery condition

Dimensions in mm



Features

- > Polypropylene housing
- > Assembly from outside
- > Covers a wide range of applications
- > Mains voltage variant

Approvals



Ordering Information

Packing Unit	5	pcs
Weight per piece	38	g
Weight per package	200	g

© PIC GmbH

PLS-092A-6PPH

PLS-092A-6PPH

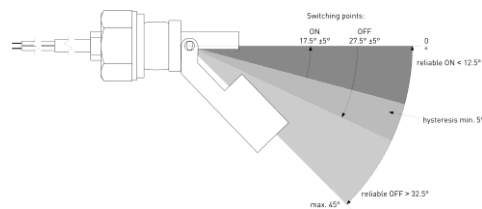
Horizontal Level Sensor



Material Information

	Material	Colour
HOUSING	PP	black
Cable	UL 2464, AWG 22, 20mm dismantelt4mm stripped and tinned	Black
Nut	PP, M 16 x 12 mm	black
Float	PP	black
Potting compound	Epoxy	black
Sealing ring	EPDM	black
Washer	PPID 16.5 x OD 28.7 x H2.0 mm	black

Operation View

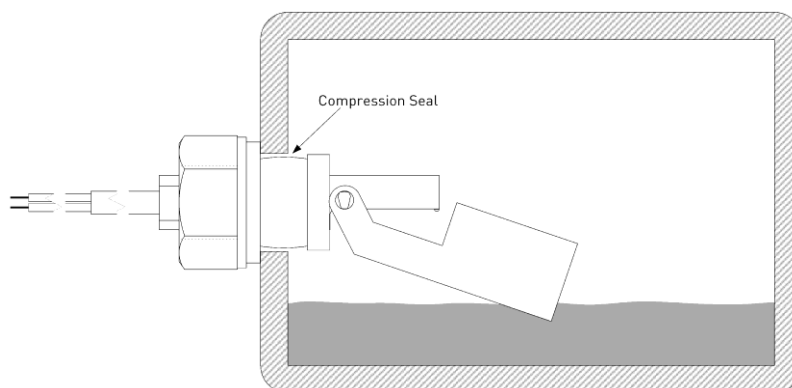


Remarks

When mounted near ferromagnetic parts switching distance of PLS-092A-6PPH may vary.

Electromagnetical influences and magnetic fields may change the switching behaviour of the Level Sensor.

Mounting



When mounted stem up, operating functions are reversed.