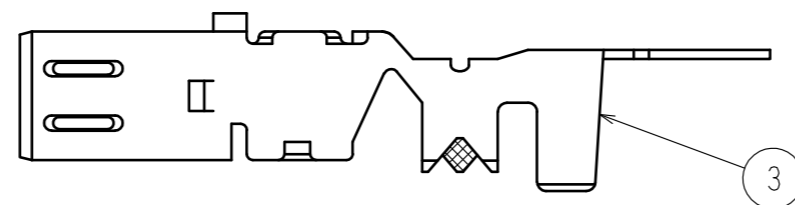
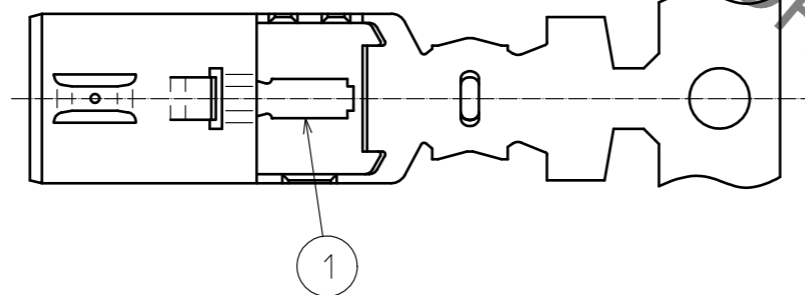
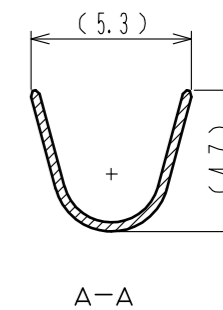
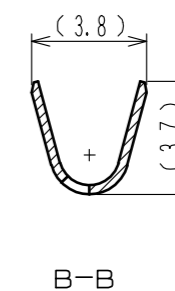
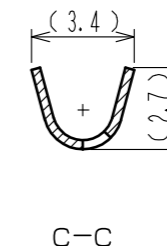
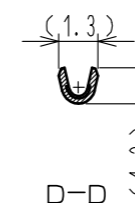
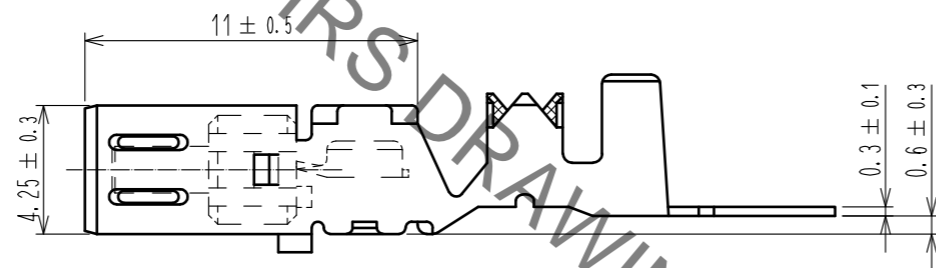
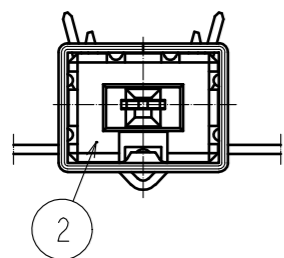
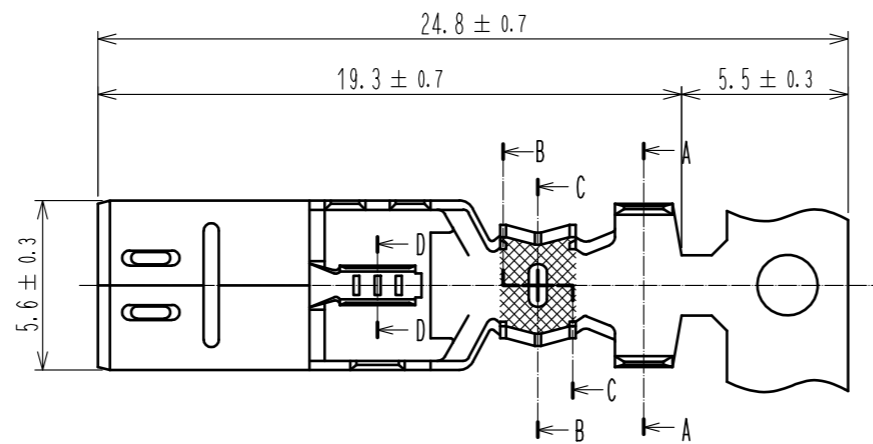


Aug.1.2022 Copyright 2022 HIROSE ELECTRIC CO., LTD. All Rights Reserved.  
 In case of consideration for using Automotive equipment / device which demand high reliability, kindly contact our sales window correspondents.

ELV. RoHS COMPLIANT



NOTES  
 1 PER REEL : 3000 CONTACTS  
 2 THIS REEL DIAMETER SHALL BE  $\phi 750$ , AND CRIMPING MACHINE NEEDS ADDITIONAL PARTS AS CM 105/RS-GT.

2	PBT	UL94HB, DARK GRAY					
1	COPPER ALLOY	TIN PLATING	3	COPPER ALLOY TIN PLATING			
NO.	MATERIAL	FINISH . REMARKS	NO.	MATERIAL FINISH . REMARKS			
UNITS mm		SCALE 1 : 1	COUNT 	DESCRIPTION OF REVISIONS	DESIGNED	CHECKED	DATE
<b>HRS</b> HIROSE ELECTRIC CO., LTD.		APPROVED : KI. HIROKAWA 20200327	DRAWING NO. EDC-165699-55-00				
		CHECKED : MO. OKADA 20200327	PART NO. GT13-30/1.6-2.9SCF(55)				
		DESIGNED : NK. IKUTA 20200327	CODE NO. CL763-0012-0-55				
		DRAWN : YK. MITSUISHI 20200318					