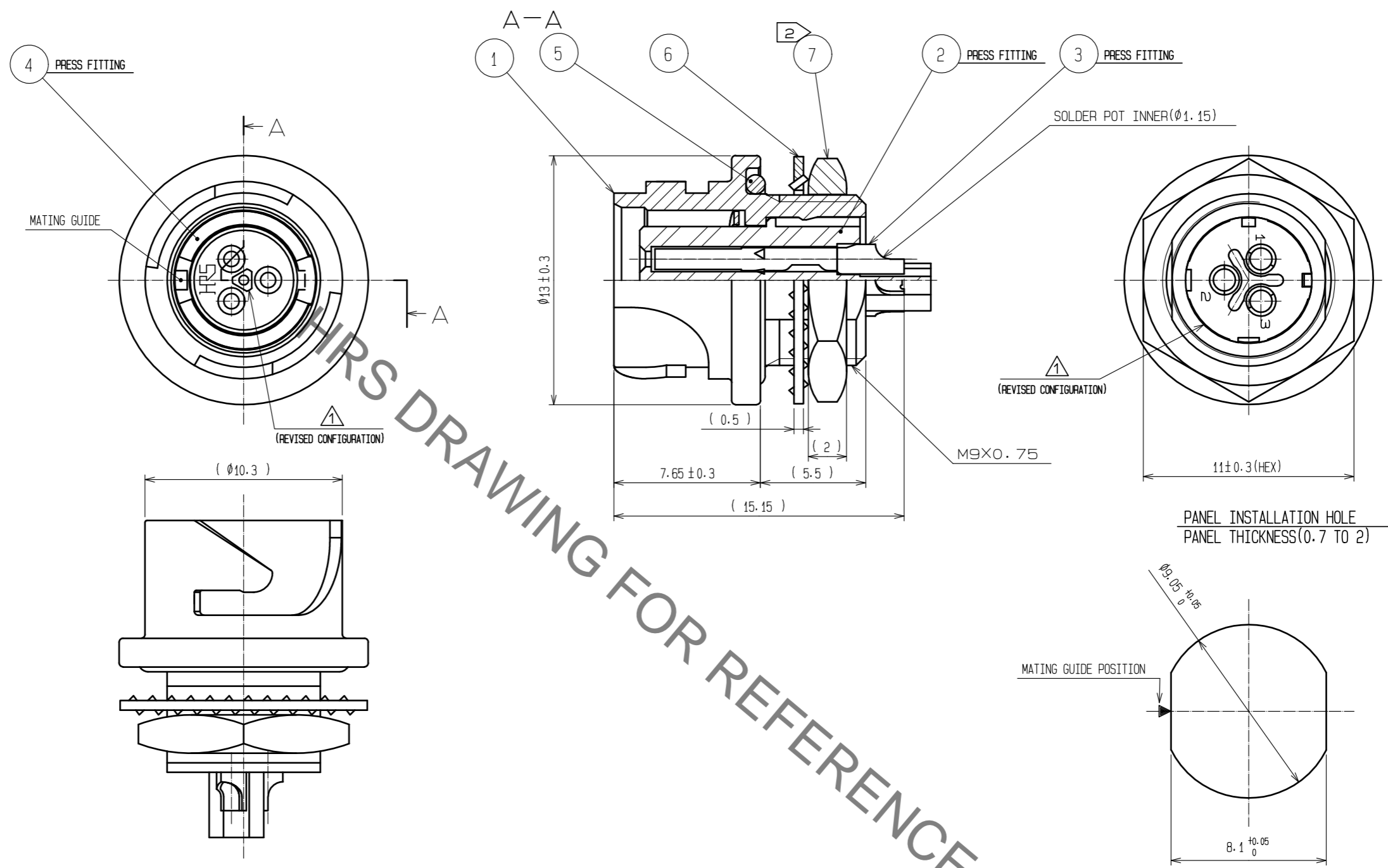


Aug.1.2022 Copyright 2022 HIROSE ELECTRIC CO., LTD. All Rights Reserved.
 In case of consideration for using Automotive equipment / device which demand high reliability, kindly contact our sales window correspondents.



- NOTES
- ① PLATING(REF.NO.③)
 CONTACT AREA : GOLD 0.2μm min
 OTHERS : GOLD AND NICKEL
 UNDER PLATING : NICKEL 2μm min
 - ② THE RECOMMENDED CLAMP TORQUE OF REF.NO. ⑦ TO BE 1.5 TO 2N·m.
 THREAD LOCKER TO THE THREADED PORTION OF REF.NO.① IS RECOMMENDED TO PREVENT REF.NO. ⑦ FROM LOOSING.
 - ⚠ RECOMMENDED THREAD LOCKER:LOCTITE 263, HENKEL JAPAN LTD.
 - ③ WHEN THIS CONNECTOR IS MOUNTED ON TO PANEL, BE CAREFUL REF.NO. ⑤ IS ASSEMBLED SURELY INTO THE GROOVE OF REF.NO. ① AS SHOWN IN THIS FIGURE TO KEEP WATERPROOF EFFECTIVENESS.

4	PHOSPHOR BRONZE	NICKEL PLATING			
3	COPPER ALLOY	①	7	STEEL	NICKEL PLATING
2	PPS	(BLACK) UL94V-0	6	STEEL	NICKEL PLATING
1	ZINC ALLOY	NICKEL PLATING	5	CHLOROPRENE RUBBER	(BLACK)
NO.	MATERIAL	FINISH . REMARKS	NO.	MATERIAL	FINISH . REMARKS

UNITS mm		SCALE 4 : 1	COUNT 3	DESCRIPTION OF REVISIONS DIS-C-00001698	DESIGNED HY. KISHI	CHECKED HY. KOBAYASHI	DATE 17. 08. 11
APPROVED : MR. YOSHIDA 05. 01. 05				DRAWING NO. EDC3-114149-00			
CHECKED : MO. SATOH 05. 01. 05				PART NO. LF07WBR-3S			
DESIGNED : YH. YAMADA 05. 01. 05				CODE NO. CL136-1004-5-00			
DRAWN : YH. YAMADA 05. 01. 05				①/1			