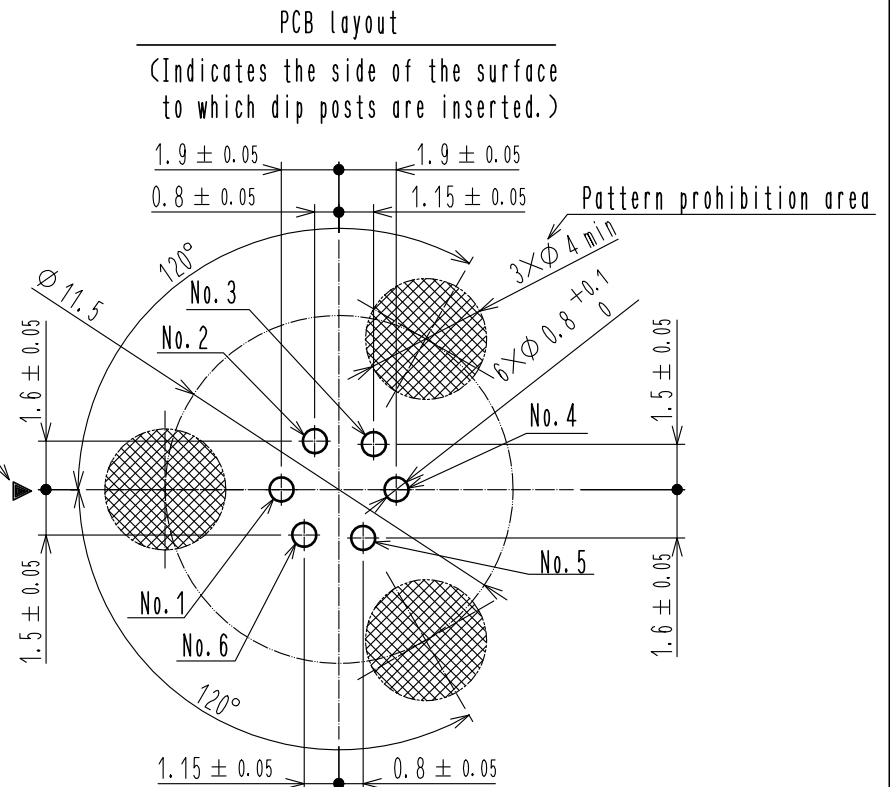
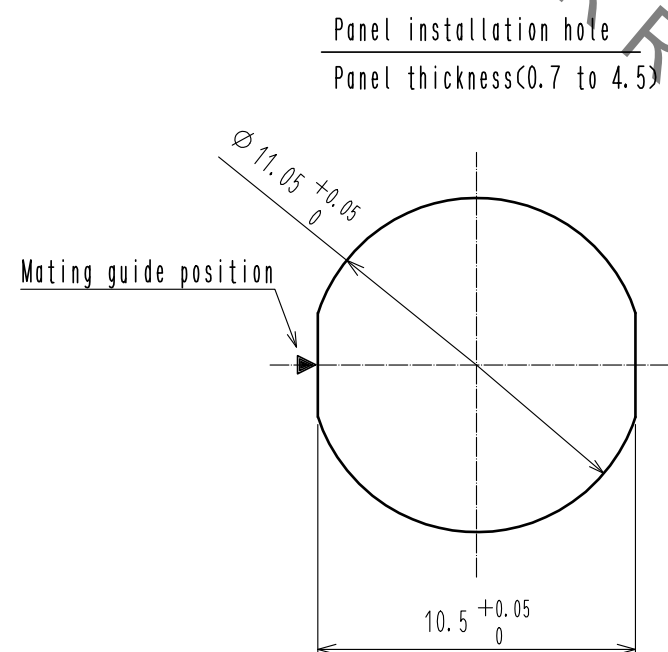
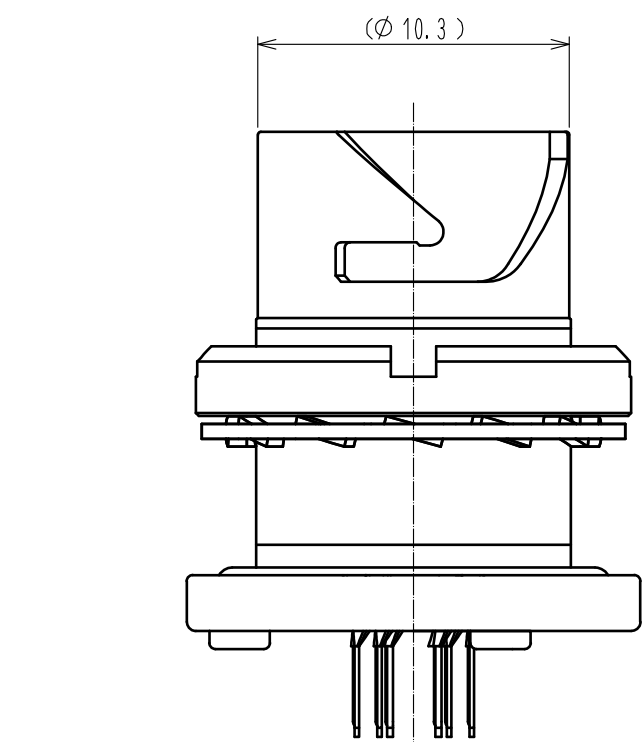
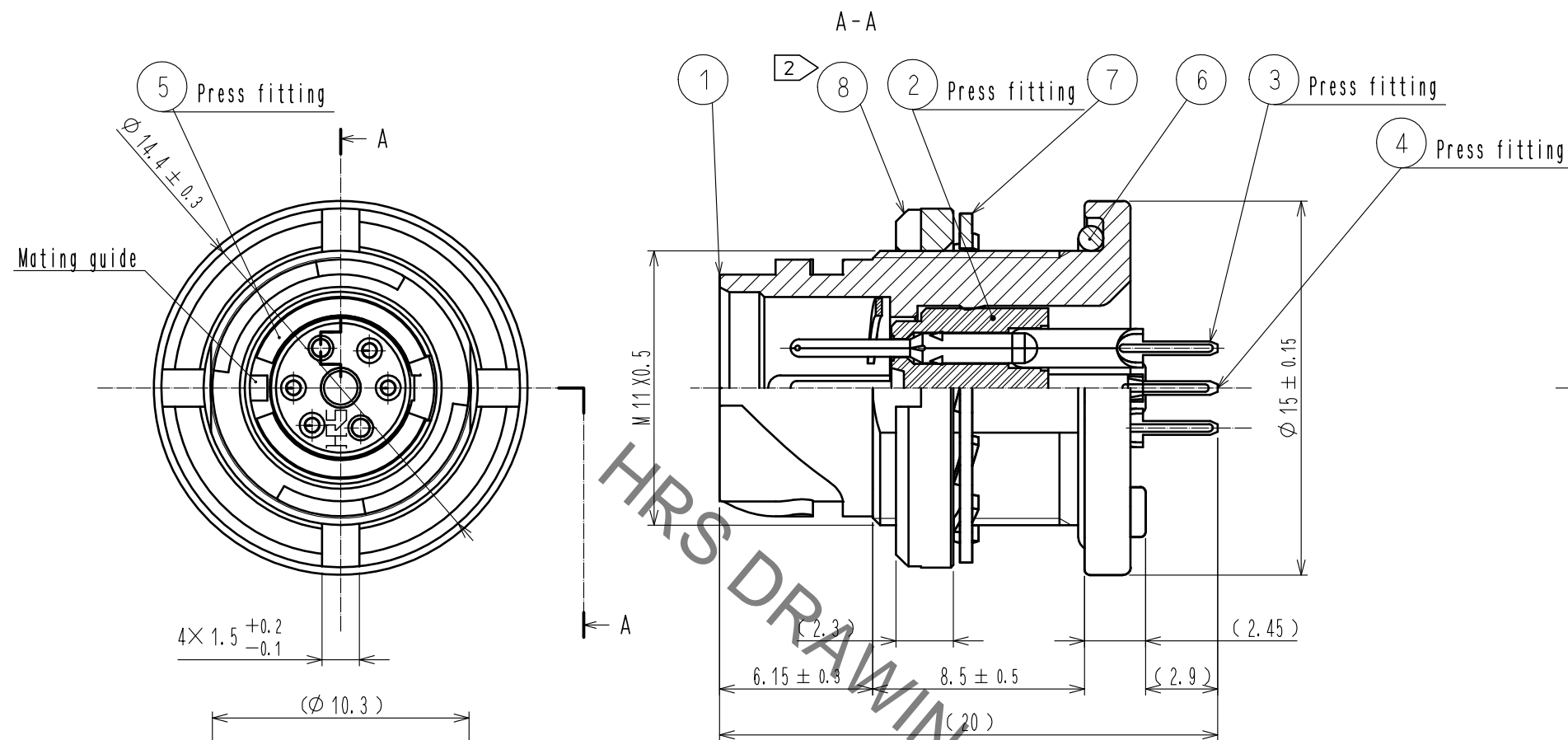


Aug.1.2022 Copyright 2022 HIROSE ELECTRIC CO., LTD. All Rights Reserved.
In case of consideration for using Automotive equipment / device which demand high reliability, kindly contact our sales window correspondents.

1 2 3 4 5 6 7 8

A
B
C
D
E
F

A
B
C
D
E
F



- NOTES
- ① Plating (Ref.No. ③, ④)
Contact area : Gold 0.2 μm min
Others : Gold flash
Under Plating : Nickel 2 μm min
 - ② The recommended clamp torque of Ref.No. ⑧ to be 1.5 to 2N·m.
Thread locker to the threaded portion of Ref.No. ① is recommended to prevent Ref.No. ④ from loosening. Recommended thread locker:LOCTITE 263,HENKEL JAPAN LTD.
 - ③ When this connector is mounted on to panel, be careful Ref.No. ⑥ is assembled surely into the groove of Ref.No. ① as shown in this figure to keep waterproof effectiveness.
 - ④ Rotation examples of No. ③ and ④ to ① are shown.

NO.	MATERIAL	FINISH	REMARKS	NO.	MATERIAL	FINISH	REMARKS
4	Copper alloy	①		8	Brass	Nickel plating	
3	Copper alloy	①		7	Phosphor bronze	Nickel plating	
2	PPS	(Black)	UL94V-0	6	Chloroprene rubber	(Black)	
1	Zinc alloy	Nickel plating		5	Phosphor bronze	Nickel plating	

UNITS	SCALE	COUNT	DESCRIPTION OF REVISIONS	DESIGNED	CHECKED	DATE
mm	4 : 1	△				
APPROVED : HY. KOBAYASHI			18.03.13	DRAWING NO. EDC-119203-31-00		
CHECKED : HY. KOBAYASHI			18.03.13	PART NO. LF07WBRB-6PD-A(31)		
DESIGNED : TY. SUZUKI			18.03.13	CODE NO. CL136-1021-0-31		
DRAWN : TY. SUZUKI			18.03.13	1/1		