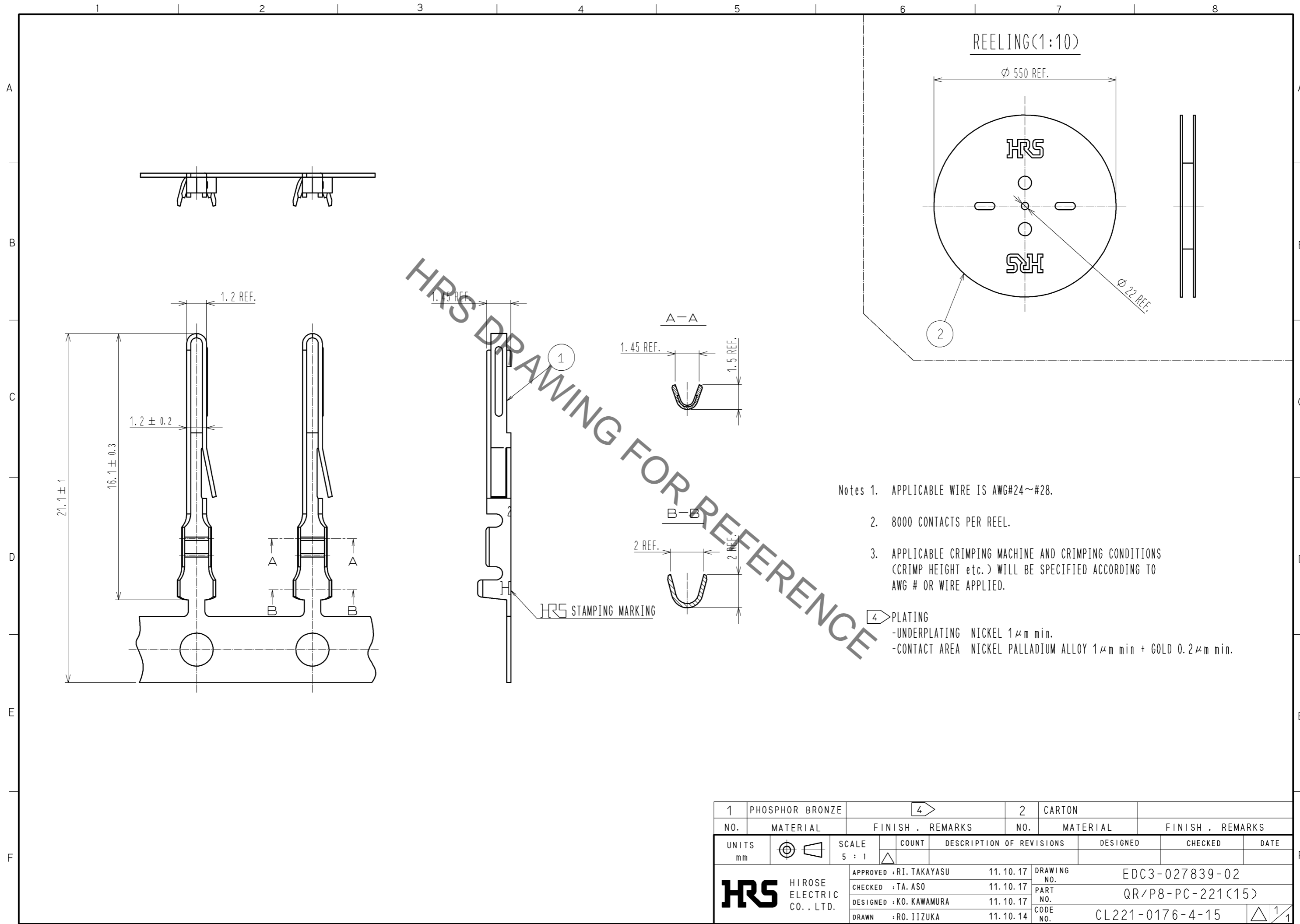


Aug.1.2022 Copyright 2022 HIROSE ELECTRIC CO., LTD. All Rights Reserved.
In case of consideration for using Automotive equipment / device which demand high reliability, kindly contact our sales window correspondents.



- Notes 1. APPLICABLE WIRE IS AWG#24~#28.
 2. 8000 CONTACTS PER REEL.
 3. APPLICABLE CRIMPING MACHINE AND CRIMPING CONDITIONS (CRIMP HEIGHT etc.) WILL BE SPECIFIED ACCORDING TO AWG # OR WIRE APPLIED.
 4. PLATING
 -UNDERPLATING NICKEL 1 μ m min.
 -CONTACT AREA NICKEL PALLADIUM ALLOY 1 μ m min + GOLD 0.2 μ m min.

1	PHOSPHOR BRONZE	4	2	CARTON				
NO.	MATERIAL	FINISH . REMARKS	NO.	MATERIAL	FINISH . REMARKS			
UNITS mm		SCALE 5 : 1		COUNT	DESCRIPTION OF REVISIONS	DESIGNED	CHECKED	DATE
HRS HIROSE ELECTRIC CO., LTD.		APPROVED : RI. TAKAYASU	11.10.17	DRAWING NO. EDC3-027839-02				
		CHECKED : TA. ASO	11.10.17	PART NO. QR/P8-PC-221(15)				
		DESIGNED : KO. KAWAMURA	11.10.17	CODE NO. CL221-0176-4-15				
		DRAWN : RO. IIZUKA	11.10.14					