

## PLS-092A-3PPH

# PLS-092A-3PPH

Horizontal Level Sensor



### Electrical Characteristics @ 25 °C

Contact form		A
Contact rating max.	W / VA	10
Switching voltage max.	VDC	200
	VAC	140
Switching current max.	A	1
Carry current max.	A	1.2
Breakdown voltage min.	VDC	240
Total resistance max.	mΩ	200

### Environmental Characteristics

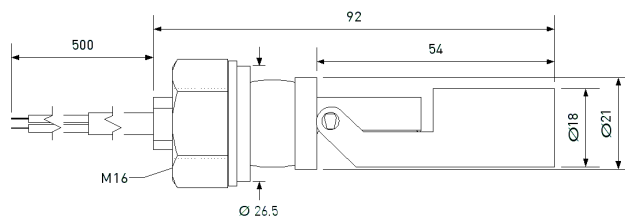
Operating temperature	°C	-20 to +65
Storage temperature	°C	-20 to +65

### Mechanical Characteristics

Density of float typ.*	g / cm <sup>3</sup>	0.7
Recommended minimum gravity of medium	g / cm <sup>3</sup>	Density of float + 20%

\* in delivery condition

### Dimensions in mm



### Features

- Polypropylene housing
- Assembly from outside
- Covers a wide range of applications

### Approvals

RoHS

REACH

IP 67

### Ordering Information

Packing Unit	5	pcs
Weight per piece	36.6	g
Weight per package	200	g

PLS-092A-3PPH

**PLS-092A-3PPH**

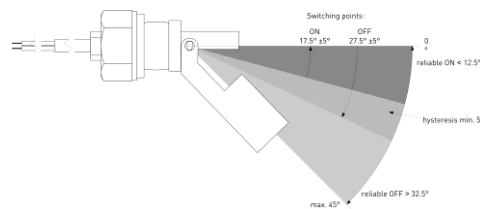
Horizontal Level Sensor



Material Information

	Material	Colour
HOUSING	PP	black
Cable	UL 2464, AWG 22, 20mm dismantelt4mm stripped and tinned	Black
Nut	PP, M 16 x 12 mm	black
Float	PP	black
Potting compound	Epoxy	black
Sealing ring	EPDM	black
Washer	PPID 16.5 x OD 28.7 x H2.0 mm	black

Operation View

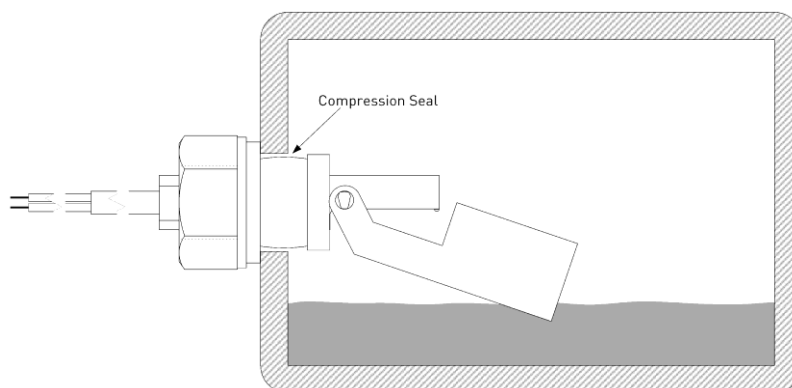


Remarks

When mounted near ferromagnetic parts switching distance of PLS-092A-3PPH may vary.

Electromagnetical influences and magnetic fields may change the switching behaviour of the Level Sensor.

Mounting



When mounted stem up, operating functions are reversed.