



DTC-SX-W6

80W



FEATURES:

- High Reliability
- Meets CEC, CoC, EISA, RoHS, and DoE requirements
- Over voltage protection
- Short circuit protection
- Over load protection
- Meets UL, CSA, TUV, IEC60950-1 standards
- 100% burn-in test at max load under 35~45 centigrade
- Meets Energy Star level 6 requirements
- Power ON LED indicator



MODEL/CHANNEL		Unit	DTC80-09 SX-W6	DTC80-12 SX-W6	DTC80-15 SX-W6	DTC80-18 SX-W6
OUTPUT	Output Voltage	Vdc	9	12	15	18
	Output Regulation	A	8	6.67	5.34	4.45
MODEL/CHANNEL		Unit	DTC80-24 SX-W6	DTC80-28 SX-W6		DTC80-48 SX-W6
OUTPUT	Output Voltage	Vdc	24	28		48
	Output Regulation	A	3.34	2.86		1.67
	Ripple & Noise(max) *3	mS	<240mVpp			
	O/P Regulation	mA	±5%			
	Efficiency	%	>88% @ full load, 115VAC			
	Power	W	80			
	Power Factor	mS	>0.9(115VAC100%Load)			
	Hold Up Time	-	>20ms typical at full load @ 115VAC			
INPUT	Input Voltage	Vac	90-264VAC			
	Input Current	A	2.0A@ 90Vac max			
	Input Frequency	Hz	47-63Hz			
	Inrush Current Range	A	150A at 230VAC max at cold start			
Protection	Over current Protection	-	Auto Recover			
	Over Voltage Protection	-	LATCH AC Recycle after 110~130% of rated output			
	Short circuit protection	-	Auto Recover			
Dielectric Withstand	Primary-Secondary	-	4242VDC for 4 sec			
	Primary-Frame Ground	-	2121VDC for 4 sec			
Insulation Resistance	Primary-Secondary	-	20MOhm min 500VDC			
	Primary-Frame Ground	-	20MOhm min 500VDC			
Environmental Agencies	Safety	-	UL 60950-1 CSA 22.2-No.60950-1 TUV EN60950-1 CB IEC 60950-1			
	Line Conducted	-	EN55022 Class B, EN55024 Class B, FCC Class B			
	MTBF	-	>120,000 hours at full load and 25 °C ambient temperature			
Environment	Operating Temperature	-	0 to +60°C (derate linearly by 2.5% / °C from 41°C to 60°C)			
	Storage Humidity	-	10~90% RH non-condensing			
	Storage Temperature	-	-10 to +85°C			
	Cooling	-	0.05%/°C max			
Dimension	Size(WxHxD) / Weight	mm/g	L132.0xW69.0xH40.0mm			



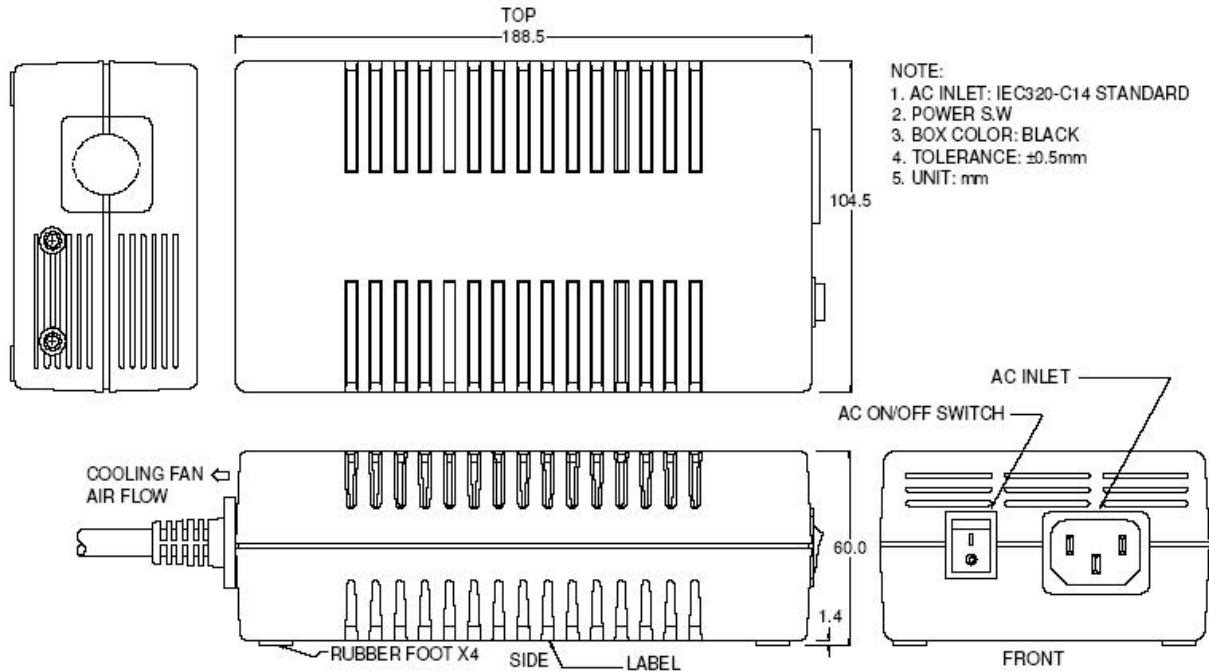
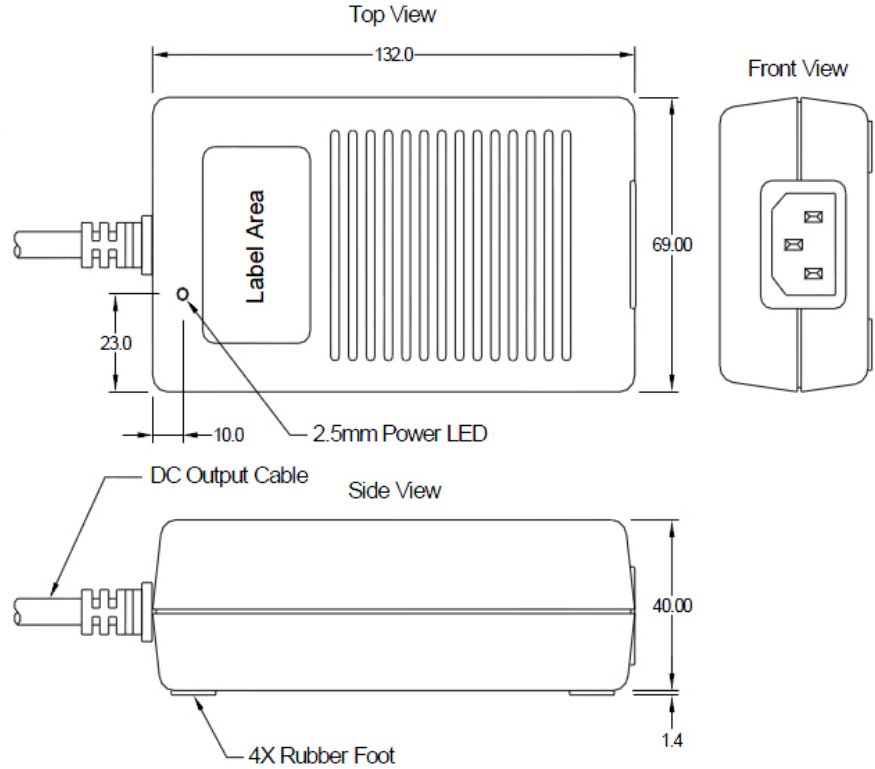


MECHANICAL DIMENSIONS

80W

Note :

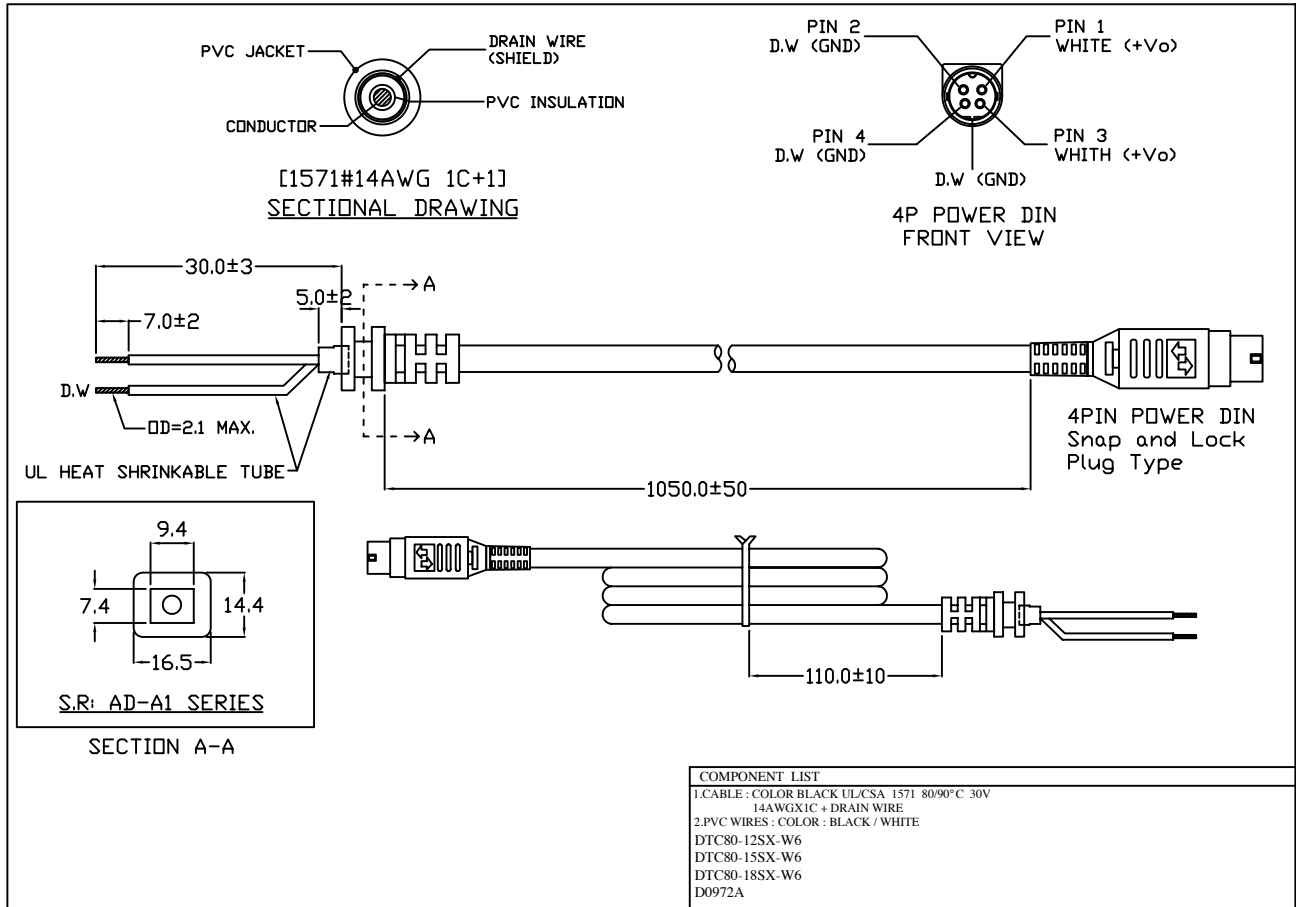
1. AC INLET : IEC320-C14 STANDARD
2. BOX COLOR : BLACK
3. TOLERANCE : +/-0.5mm
4. UNIT : mm





MECHANICAL DIMENSIONS

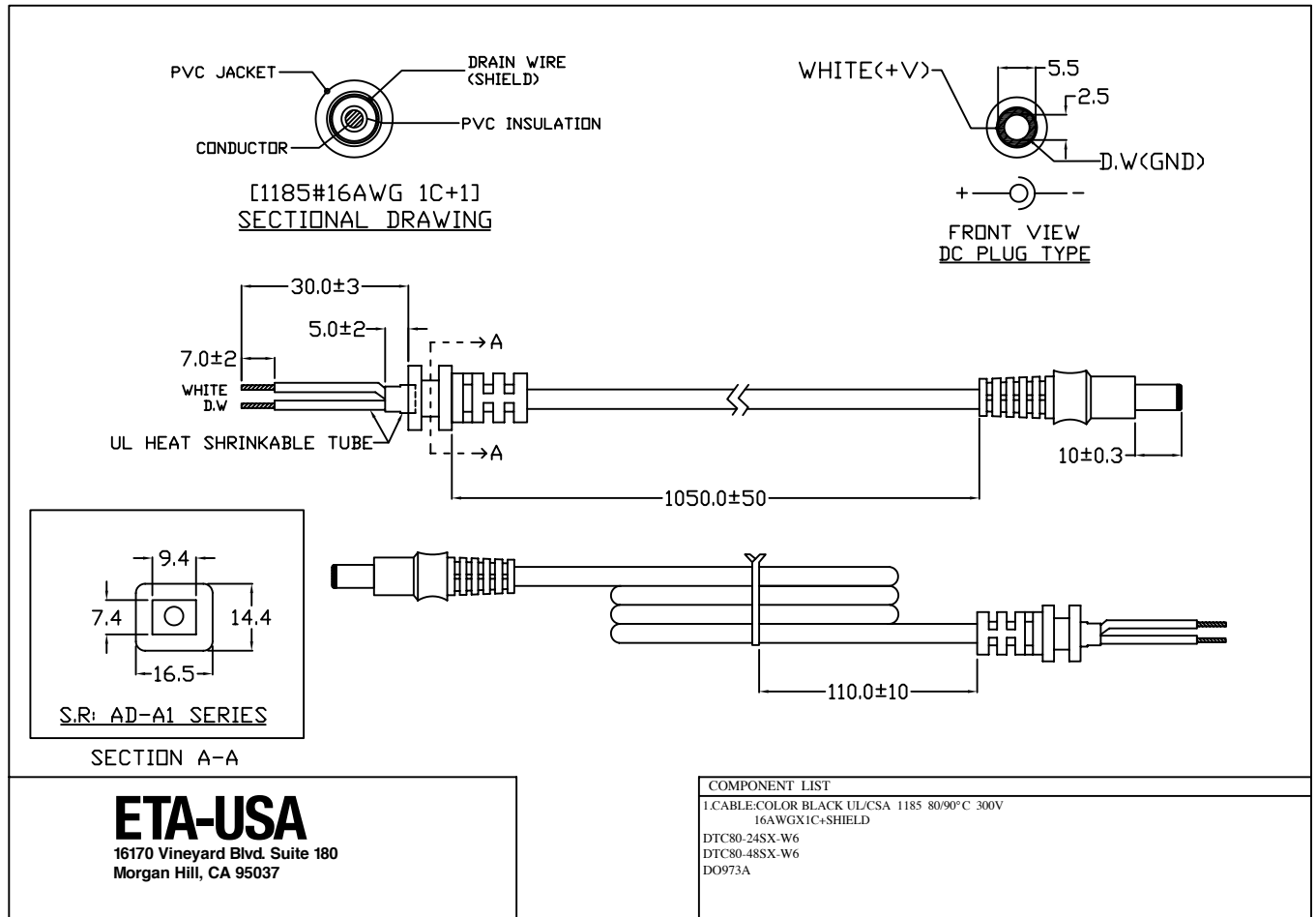
80W





MECHANICAL DIMENSIONS

80W



ETA-USA

16170 Vineyard Blvd. Suite 180
Morgan Hill, CA 95037

