

## SPLIT-TYPE FORK TURRETS

FORK

### SPECIFICATIONS

**Terminal:** Brass, Tin Plate  
**Bushing:** White PTFE

FORK-TO-TURRET

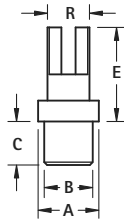


FIG. 1

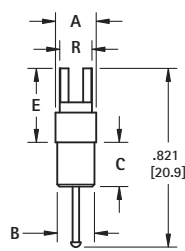


FIG. 2

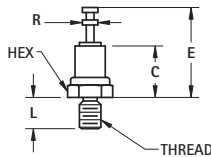
| CAT. NO. | FIG. NO. | A          | B          | C          | E           | R          | Mtg. Hole Dia. |
|----------|----------|------------|------------|------------|-------------|------------|----------------|
| 11100    | 1        | .172 (4.4) | .148 (3.8) | .125 (3.2) | .250 (6.4)  | .125 (3.2) | .136 (3.5)     |
| 11111    | 1        | .187 (4.8) | .171 (4.3) | .150 (3.8) | .390 (9.9)  |            |                |
| 11112    | 1        | .187 (4.8) | .171 (4.3) | .150 (3.8) | .453 (11.5) |            |                |
| 11113    | 1        | .187 (4.8) | .171 (4.3) | .150 (3.8) | .328 (8.3)  |            |                |
| 11114    | 1        | .187 (4.8) | .171 (4.3) | .150 (3.8) | .390 (9.9)  | .148 (3.8) | .158 (4.0)     |
| 11115    | 1        | .187 (4.8) | .171 (4.3) | .150 (3.8) | .453 (11.5) |            |                |
| 11116    | 2        | .187 (4.8) | .171 (4.3) | .212 (5.4) | .390 (9.9)  |            |                |

## THREADED TURRET TERMINALS



### SPECIFICATIONS

**Terminal:** Brass, Tin Plate  
**Bushing:** White PTFE



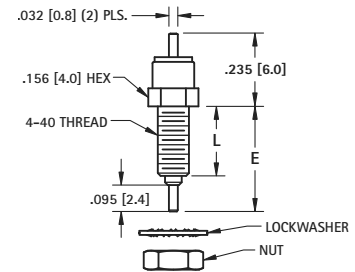
| CAT. NO. | Thread | Hex        | C          | E           | L          | R          |
|----------|--------|------------|------------|-------------|------------|------------|
| 11350    | 2-56   | .156 (3.9) | .206 (5.2) | .360 (9.1)  | .125 (3.2) | .062 (1.6) |
| 11351    | 4-40   | .250 (6.4) | .270 (6.9) | .510 (12.9) | .250 (6.4) | .094 (2.4) |
| 11352    | 6-32   | .250 (6.4) | .270 (6.9) | .510 (12.9) | .375 (9.5) | .094 (2.4) |

## THREADED FEED - THRU TERMINALS



### SPECIFICATIONS

**Terminal:** Brass, Tin Plate  
**Bushing:** White PTFE  
**Body:** Brass, Nickel Plate



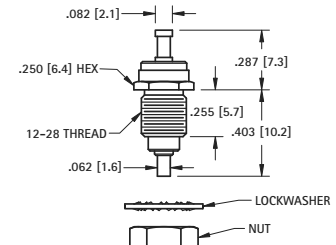
| CAT. NO. | E          | L          |
|----------|------------|------------|
| 11360    | .328 (8.3) | .200 (5.1) |
| 11361    | .378 (9.6) | .250 (6.4) |

Nut and washer supplied unassembled



### SPECIFICATIONS

**Terminal:** Brass, Tin Plate  
**Bushing:** White PTFE  
**Body:** Brass, Nickel Plate



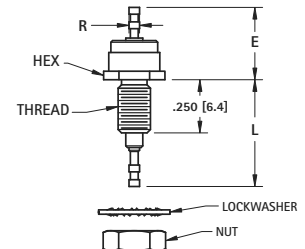
CAT. NO. 11362

Nut and washer supplied unassembled



### SPECIFICATIONS

**Terminal:** Brass, Tin Plate  
**Bushing:** White PTFE  
**Body:** Brass, Nickel Plate



Nut and washer supplied unassembled

| CAT. NO. | Thread | Hex        | E           | L           | R          |
|----------|--------|------------|-------------|-------------|------------|
| 11363    | 10-32  | .312 (7.9) | .425 (10.8) | .565 (14.3) | .062 (1.6) |
| 11364    | 6-32   | .188 (4.8) | .368 (9.3)  | .510 (12.9) | .040 (1.0) |

## MOLDED DIALLYL PHTHALATE INSULATED THREADED TERMINALS

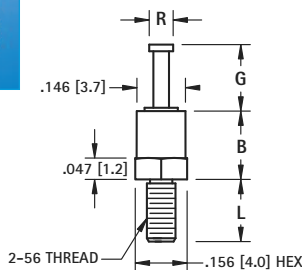
### MATERIAL:

**Terminal:** Brass, Tin Plate  
**Insulator:** Blue Molded Diallyl Phthalate, SDGF  
**Base:** Brass, Tin Plate

### Properties:

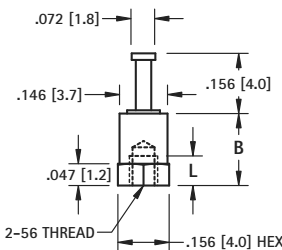
- High Dielectric Breakdown
- Continuous Use Temperature up to 350°F (176 °C)
- UL 94 V-O Rated
- Other platings and insulator colors available upon request

### SINGLE TURRET TO MALE THREAD



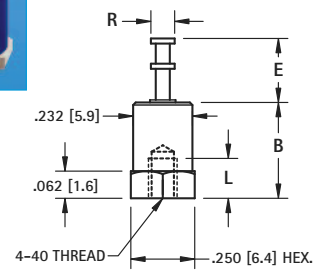
| CAT. NO. | B          | E          | L          | R          |
|----------|------------|------------|------------|------------|
| 11500    | .235 (6.0) | .156 (4.0) | .125 (3.2) | .072 (1.8) |
| 11501    | .235 (6.0) | .218 (5.5) | .125 (3.2) | .072 (1.8) |
| 11502    | .235 (6.0) | .218 (5.5) | .187 (4.8) | .072 (1.8) |

### SINGLE TURRET TO FEMALE THREAD



| CAT. NO. | L          | B          |
|----------|------------|------------|
| 11510    | .078 (2.0) | .235 (5.9) |
| 11511    | .117 (3.0) | .391 (9.9) |

### DOUBLE TURRET TO FEMALE THREAD



| CAT. NO. | B           | E          | L          | R          |
|----------|-------------|------------|------------|------------|
| 11512    | .375 (9.5)  | .219 (5.6) | .156 (4.0) | .093 (2.4) |
| 11513    | .594 (15.1) | .344 (8.7) | .219 (5.6) | .140 (3.6) |