

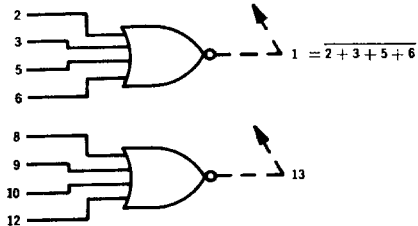
DUAL 4-INPUT EXPANDERS

MRTL MC900/800 series

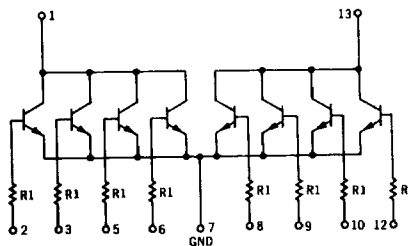
MC986 • MC886

Available in TO-86 flat package, add "F" suffix.

Two 4-input gate expanders housed in a single package may be used independently or combined. Each of these expanders increases the input capability of a standard MRTL gate by four.



When an expander is added to a gate, subtract 0.4 load unit from the output of the gate for each expander circuit added.



V_{CC} connection to pin 14 not shown.

TYPICAL RESISTANCE
VALUE
R1 = 450 Ω

62

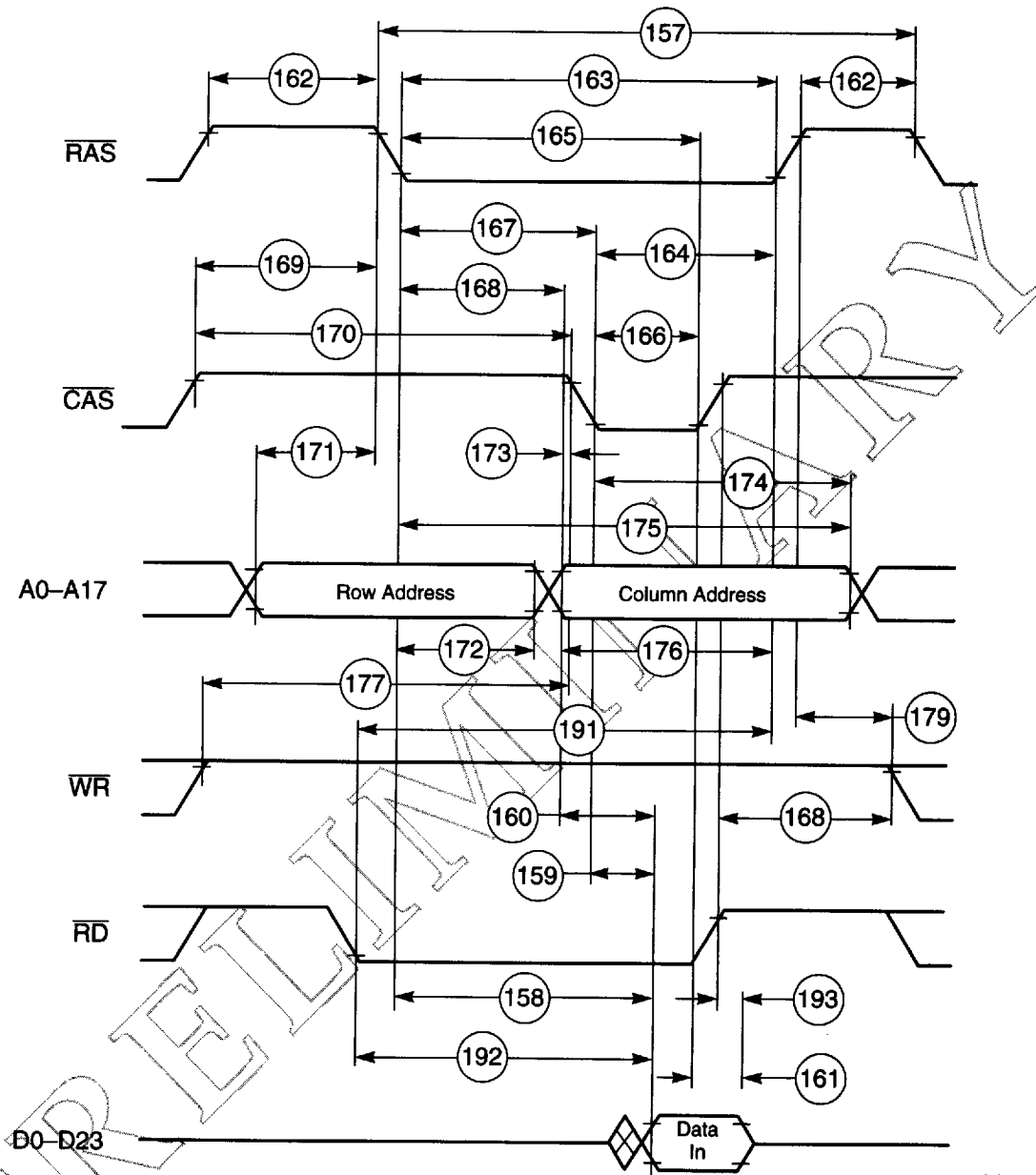
ELECTRICAL CHARACTERISTICS

Test procedures are shown for one expander only. The other expander is tested in the same manner.

Characteristic	Symbol	Pin Under Test	TEST VOLTAGE VALUES												Pin Under Test										
			MC986						MC886																
			-55°C		+25°C		+100°C		0°C		+25°C		+100°C												
Input Current	I_{in}	2 3 5 6	Min	Max	Min	Max	Min	Max	Min	Max	Min	Max	Min	Max	Min	Max	Unit	V_{in}	V_{em}	V_{BOT}	V_{off}	V_{CC}	V_g^*	(Ohms)	
Output Leakage Current	I_{CEX}	1	Min	Max	Min	Max	Min	Max	Min	Max	Min	Max	Min	Max	Min	Max	μA_{dc}	2	3	5	6	14	7		
Output Voltage	V_{out}	1	Min	Max	Min	Max	Min	Max	Min	Max	Min	Max	Min	Max	Min	Max	mVdc	-	2	3	5	6	14	7	
Saturation Voltage	$V_{CE(sat)}$	1	Min	Max	Min	Max	Min	Max	Min	Max	Min	Max	Min	Max	Min	Max	mVdc	-	2	3	5	6	14	7	

Ground inputs of expander not under test.
 * Resistor Value to V_{CC} .
 Other pins not listed are left open.

63



AA0476

Figure 2-18 DRAM Out-of-Page Read Access

Preliminary Data