

# RS-232 Null Modem Adapter

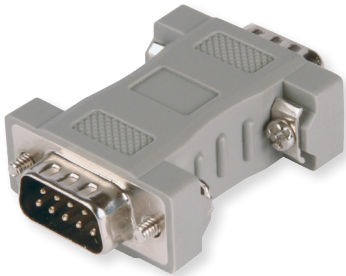
Model MMNM9

B+B SMARTWORX

Powered by

ADVANTECH

[www.advantech-bb.com](http://www.advantech-bb.com)



## PRODUCT FEATURES

- Interconnect two devices with similar DTE ports
- Reverse Pin 2 (Transmit Data) and Pin 3 (Receive Data)
- Connect TD to RD, DTR to DSR, and RTS to CTS
- Transfer port power from host to peripheral
- Ideal for use with port powered converters from B+B SmartWorx

Null modem adapters are used to connect two DTEs (computer, terminal, printer etc.) directly using a RS-232 serial cable. The original RS-232 standard only defined the connection of DTEs with DCEs (i.e. modems).

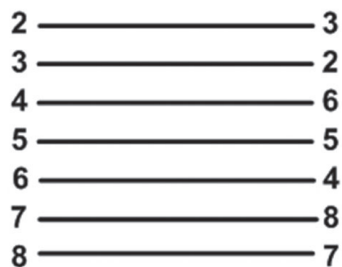
With a null modem adapter, the Transmit and Receive lines are cross-linked. Depending on the purpose, one or more handshake lines are cross-linked. Several wiring layouts are in use because the null modem connection is not covered by a standard. B+B SmartWorx' Null Modem adapter comes with a variety of connector options and pin outs to cover most common applications.

## ORDERING INFORMATION

MODEL NUMBER	DESCRIPTION
MMNM9	Null Modem Adapter - DB9 Male / DB9 Male

## PIN OUT DIAGRAM

### MMNM9 (DB9 Male to DB9 Male)



All product specifications are subject to change without notice.  
MMNM9\_NullModem\_3517ds