



# MicroVue

## Digital Microscope with Built-in HD Monitor and 360 Viewer

The MicroVue has all the features required for digital inspection. View live images, capture high resolution images/video files, make text annotations, take accurate measurements, and more without the need for an external PC. The included 360 Viewer Attachment provides a 35 degree angled view and can be rotated 360 degrees to view areas that are otherwise difficult to see.

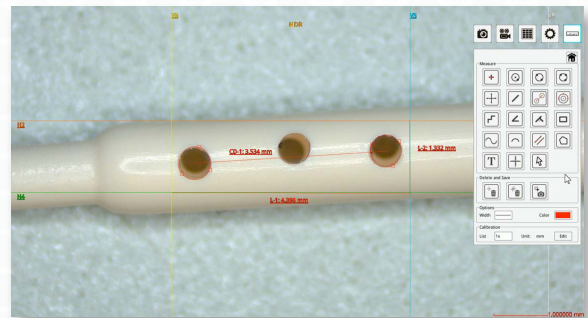
### Key Features

- 360 Viewer Attachment rotates to give a 35 degree angled view
- Built-in 11.6" monitor for ergonomic viewing
- 17x - 110x Magnification on the built-in monitor (when 360 viewer is in the on position, the angled on-screen image is displayed at a reduced 0.5x magnification)
- 8.6x - 221x Magnification range with optional lenses (sold separately, not compatible with 360 viewer)
- HDMI output for external monitor viewing
- Built-in measurement capabilities - No PC required
- Save image/video files to USB storage device
- Compact design saves bench top space

<b>360 Viewer Attachment</b> Rotates to give a 35 degree angled view	<b>Enhances Productivity</b> Eliminates eye strain and body fatigue	<b>Built-in 11.6" Monitor</b> HDMI output for external monitor viewing	<b>USB Output</b> Save image/video files to USB storage device
---	--	---	---



**360 Viewer**  
(View Objects at a 35 Degree Angle)



**Built-in Measurement Capabilities**  
(The 360 Viewer Attachment must be in the OFF position to use measurement functions)

<b>MicroVue</b> Digital Microscope with Built-In HD Monitor and 360 Viewer	
<b>Item #</b>	26700-140-3D
<b>Magnification</b>	17x - 110x (based on the built-in monitor) 33x - 210x (based on an external 22" monitor)
<b>Working Distance</b>	100mm (Standard Lens with 360 Viewer Off)
<b>Resolution</b>	1920 x 1080p Full HD at 60 FPS
<b>Output</b>	HDMI, USB Mouse, USB Storage
<b>Measurement</b>	Built-in Measurement Capabilities
<b>Package Contents</b>	<ul style="list-style-type: none"> <li>• MicroVue Digital Microscope</li> <li>• MicroVue Track Stand Post (13")</li> <li>• MicroVue Track Stand Base (10.25" x 12.73")</li> <li>• DC-12V Power Adapter</li> <li>• Wireless USB Mouse (requires 2 AAA batteries)</li> <li>*batteries not included</li> <li>• USB Flash Drive</li> <li>• Tools for Assembly</li> <li>• Assembly Guide</li> <li>• 360 Viewer Attachment</li> <li>• User Manual</li> </ul>