

ACX Series • High Accuracy Current Transformers

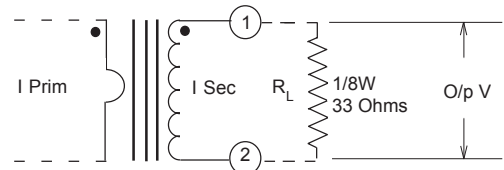
Features

- Primary current range 50-150A
 - 1% accuracy
 - Operating frequency 50/60Hz
 - Turns Ratio 2500 : 1
 - Rated burden resistance 33 Ohms
 - Dielectric withstand voltage 4KVrms
 - Operating temperature range -40 to +85°C
 - All Materials UL94V-0
- Manufactured in an ISO 9001:2015 and ISO 14001:2015 certified Talema facility
 - Fully RoHS & REACH Compliant



Electrical Specifications @ 20°C		
Part No.	Current Rating in Amps	Winding Resistance in Ohms
ACX-1050	50	171
ACX-1075	75	227
ACX-1100	100	155
ACX-1150	150	135

Schematic



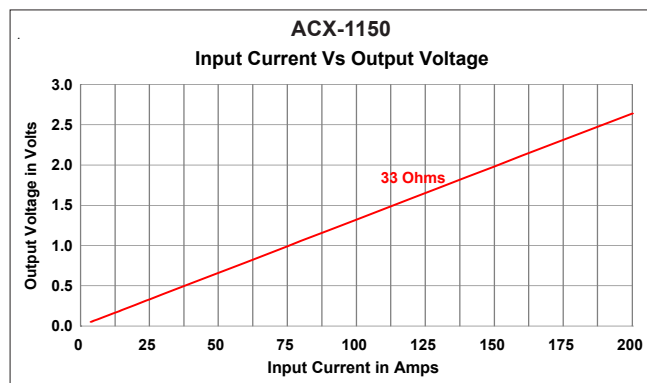
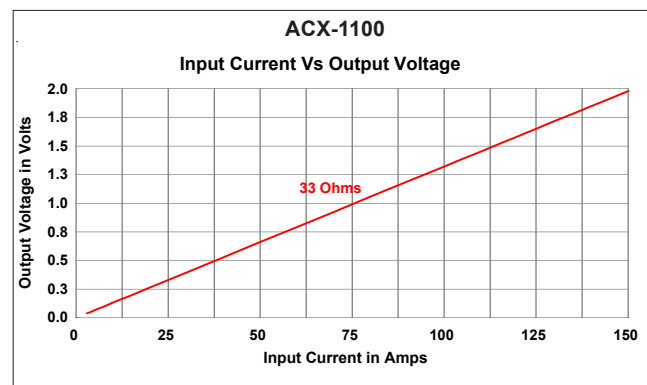
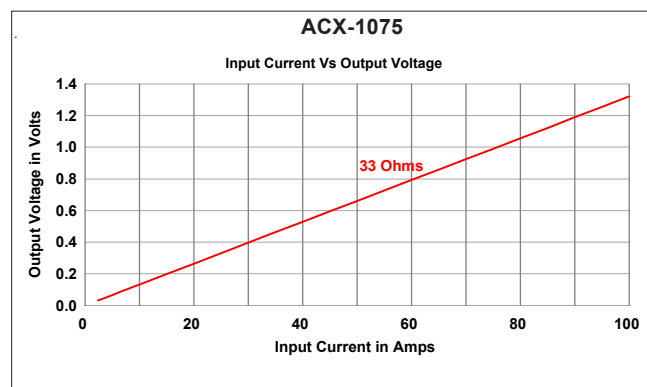
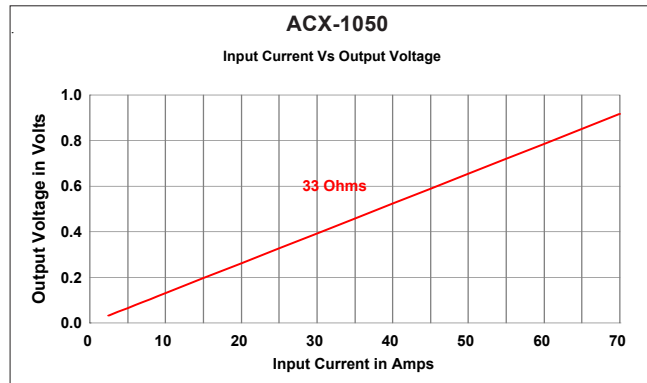
Mechanical Drawing

<h4 style="text-align: center;">ACX-1050</h4>	<h4 style="text-align: center;">ACX-1075</h4>
<h4 style="text-align: center;">ACX-1100</h4>	<h4 style="text-align: center;">ACX-1150</h4>

Notes:

- 1) Dimensional Unit: mm, Tolerance: ±0.25mm (Unless Specified)
Pin Pitch Tolerance: ±0.10mm
- 2) Pin #3 for Mechanical Support.

Response Curves



Regional Locations - Design, Manufacturing, Sales & Marketing

Talema Group Regional Offices

North America

**United States
(Sales & Marketing)**

Talema Group, LLC
 PO Box 935
 900 Innovation Drive
 Suite 120, Rolla
 Missouri 65402
 Tel: +1 573-303-3675
 E-Mail:
sales@talemagroup.com
 Web: www.talema.com

Asia

**India
(Design, Manufacturing, Sales & Marketing)**

Administrative Office
Talema Electronic India Private Limited
 Door No. 221, 1st and 2nd Floor
 KJ Plaza, Opp.to Vidya Mandir School
 Meyanoor Main Road
 Salem - 636 004 Tamil Nadu INDIA
 Tel: +91 427 - 243 3100
 Fax: +91 427 - 243 3109
 E-Mail: talema@talemaindia.net
 Web: www.talema.com

Factory Premises
Talema Electronic India Private Limited
 Plot Nos. 30, 31 Electrical and Electronic
 Industrial Estate
 Suramangalam
 Salem - 636 005 Tamil Nadu INDIA
 Tel: +91 427 - 243 3000
 E-Mail: talema@talemaindia.net
 Web: www.talema.com

Europe

**Germany
(Design, Sales & Marketing)**

Talema Elektronik GmbH
 Sembdnerstr. 5
 82110 Germering
 Tel: +49 89 - 841 00 - 0
 Fax: +49 89 - 841 00 25
 E-Mail: info@talema.de
 Web: www.talema.com

**Ireland
(Design, Sales & Marketing)**

Nuvotem TEO
 Units W & X, Gweedore Business Park
 Derrybeg, Letterkenny, Co. Donegal
 Tel: +353 (0) 74 95 48666
 Fax: +353 (0) 74 95 48139
 E-Mail: info@nuvotem.com
 Web: www.nuvotem.com

**Czech Republic
(Design, Manufacturing, Sales & Marketing)**

NT Magnetics s.r.o.
 Chebská 27
 322 00 Plzeň
 Tel: +420 377 - 338 351
 Fax: +420 377 - 338 350
 E-Mail: talema@talema.cz
 Web: www.ntmagnetics.cz

Locations of Talema Group Regional Offices

