



## Main

|                           |                            |
|---------------------------|----------------------------|
| Range of Product          | Harmony GTU                |
| Product or Component Type | Advanced touchscreen panel |
| Terminal type             | Touchscreen display        |

## Complementary

|                           |                                  |
|---------------------------|----------------------------------|
| Pixel resolution          | 800 x 480                        |
| Touchscreen resolution    | 1024 x 1024                      |
| Provided equipment        | 1 flash card                     |
| [Us] rated supply voltage | 12...24 V DC power supply        |
| Supply voltage limits     | 10.8...28.8 V                    |
| Power Consumption in W    | 6.5 W                            |
| Display size              | 7 inch                           |
| Aspect ratio              | 4:3                              |
| Display type              | Colour TFT LCD                   |
| Display Resolution        | 800 x 480 pixels WVGA            |
| Display colour            | 262144 colors                    |
| Backlight lifespan        | 50000 hours                      |
| Touch panel               | Single touch analogue resistive  |
| Type of Installation      | Indoor installation              |
| Type of cooling           | Natural convection               |
| Inrush current            | 30 A                             |
| Cut-out dimensions        | 190 (+ 1/- 0) x 135 (+ 1/- 0) mm |
| Width                     | 8.02 in (203.6 mm)               |
| Height                    | 5.85 in (148.6 mm)               |
| Depth                     | 1.42 in (36 mm)                  |
| Net Weight                | 2.65 lb(US) (1.2 kg)             |

## Environment

|                                       |  |
|---------------------------------------|--|
| IP degree of protection               | Front panel IP66   |
| NEMA degree of protection             | NEMA 4X front panel  |
| Standards                             | UL 508   |
| Product Certifications                | CE   |
| Ambient air temperature for operation | 32...140 °F (0...60 °C) EN 61131-2                             |
| Ambient air temperature for storage   | -4...140 °F (-20...60 °C)                                      |
| Pollution degree                      | 2  |
| Relative Humidity                     | 10...90 % non-condensing                                       |
| Operating altitude                    | 6561.68 ft (2000 m)  |
| Vibration resistance                  | 3.5 mm constant amplitude 5...9 Hz) EN/IEC 61131-2             |
| Shock resistance                      | 147 m/s <sup>2</sup> EN/IEC 61131-2                            |
| Electromagnetic compatibility         | Electrostatic discharge immunity test level 3 EN/IEC 61000-4-2 |

## Ordering and shipping details

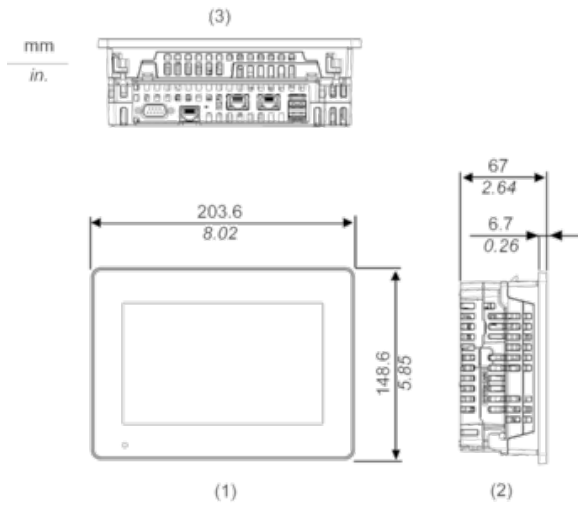
|                       |                         |
|-----------------------|-------------------------|
| Category              | 22567 - MAGELIS HMI GTU |
| Discount Schedule     | MC2                     |
| GTIN                  | 3606480841699           |
| Nbr. of units in pkg. | 1                       |
| Package weight(Lbs)   | 3.08 lb(US) (1.397 kg)  |
| Returnability         | No                      |
| Country of origin     | SG                      |

## Packing Units

|                              |                          |
|------------------------------|--------------------------|
| Unit Type of Package 1       | PCE                      |
| Package 1 Height             | 5.31 in (13.5 cm)        |
| Package 1 width              | 8.27 in (21 cm)          |
| Package 1 Length             | 10.24 in (26 cm)         |
| Unit Type of Package 2       | CAR                      |
| Number of Units in Package 2 | 8                        |
| Package 2 Weight             | 28.78 lb(US) (13.056 kg) |
| Package 2 Height             | 13.19 in (33.5 cm)       |
| Package 2 width              | 17.91 in (45.5 cm)       |
| Package 2 Length             | 21.65 in (55 cm)         |

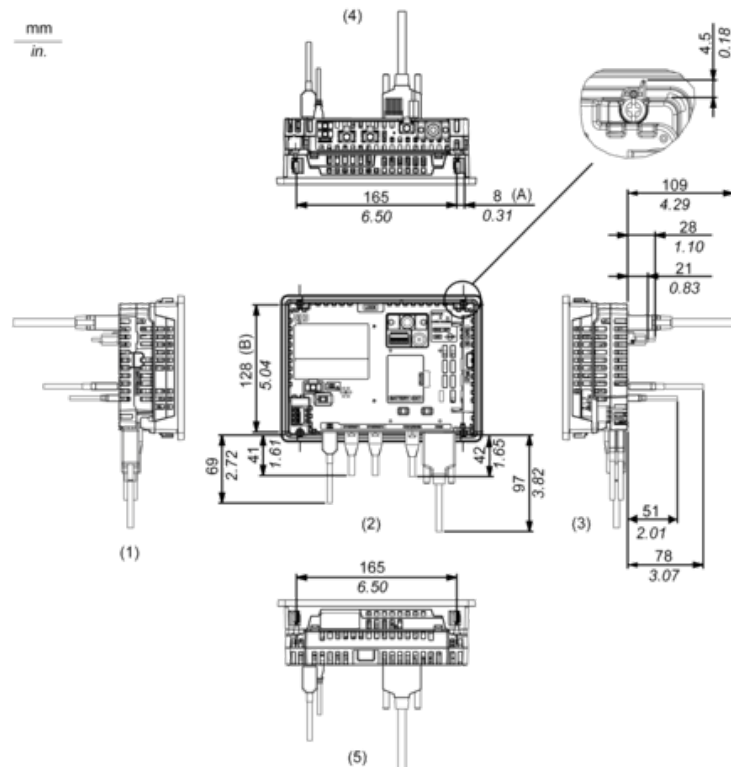
External Dimensions

Display Unit with Box Module



- 1 Front
- 2 Left
- 3 Bottom

Installation with Installation Fasteners and Dimensions with Cables



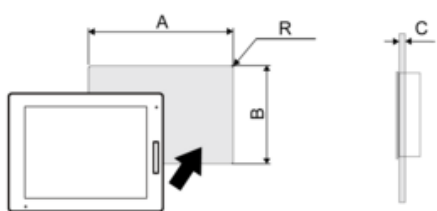
- (A) Rotation area of the fastener
- (B) Pitch of the center of installation fastner screws

- 1 Right
- 2 Front
- 3 Left
- 4 Bottom



## Mounting

### Panel Cut Dimensions



Dimensions in mm

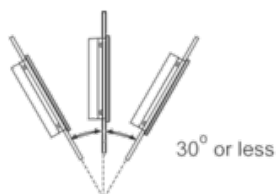
| A           | B           | C       | R      |
|-------------|-------------|---------|--------|
| 190 (+1/-0) | 135 (+1/-0) | 1.6...5 | 3 max. |

Dimensions in in.

| A               | B               | C          | R         |
|-----------------|-----------------|------------|-----------|
| 7.48 (+0.04/-0) | 5.31 (+0.04/-0) | 0.06...0.2 | 0.12 max. |

## Installation Requirements

### Mounting Angle



When installing this product in a slanted position with an incline more than 30°, the ambient temperature must not exceed 40 °C (104 °F). You may need to use forced air cooling (fan, A/C) to ensure the ambient operating temperature is 40 °C or less (104 °F or less).

## Clearance

