

CompactPRO™

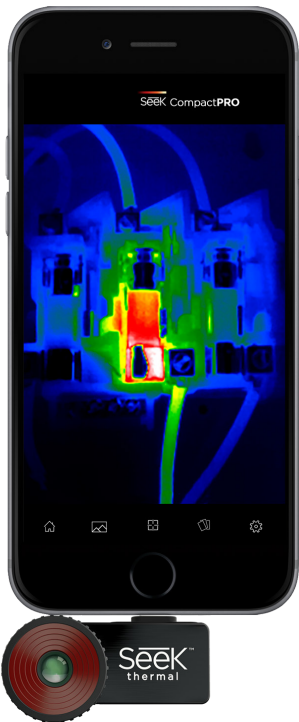
AFFORDABLE, HIGH-PERFORMANCE
THERMAL IMAGING FOR YOUR SMARTPHONE.

KEY CAMERA SPECS

- 320 x 240 Thermal Sensor
- 32° Field of View
- 40 to 626F Temperature Range
- 6 inches to 1,800 feet Distance
- Works Day & Night
- Waterproof Carrying Case

Seek™
thermal

thermal.com



CompactPRO is our most advanced thermal imaging camera designed for your smartphone. Made for iPhone® and Android™ top models, this highly-portable thermal imaging camera features a large, 320x240 thermal sensor with high sensitivity and a wide, 32-degree field of view. Offering adjustable thermal span, level, and emissivity settings, the CompactPRO delivers unprecedented high-resolution thermal imaging and software capabilities available at this price.

Designed and Manufactured in Santa Barbara, California with Global Components.

Product Name:	Seek CompactPRO
Product Type:	Thermal Imaging Camera Made for Smartphones
Seek CompactPRO Made for iPhone:	UPC: 855753005617 Part Number: LQ-AAAX
Seek CompactPRO Made for Android:	UPC: 855753005631 Part Number: UQ-AAAX
Export Regulations	Subject to US EAR Export Regulations.

Single Unit	
Included in the box:	<ul style="list-style-type: none">Seek CompactPROWaterproof Carrying Case
Device Dimensions (H x W x D)	1 x 1.75 x 1 inches
Device Weight:	.5 ounces
Box Dimensions (H x W x D)	7 x 3.75 x 1.75 inches
Box Weight:	8.3 ounces
Master Pack	
Included in the Master Pack	80 Units
Master Pack Dimensions	20 x 15 x 16 inches
Master Pack Weight	45 pounds

KEY FEATURES

320 x 240 High-Resolution Thermal Sensor
76,800 temperature pixels for maximum image clarity and sensitivity

Adjustable Emissivity
Calibrate for reflective surfaces when accuracy is critical

Wide, 32-Degree Field of View
Easily scan a large area to identify potential hazards in seconds

Focusable Lens for Quick Identification
Aim and focus from 6 inches to 1,800 feet for the sharpest image

Utilizes the Power and Display of Your Smartphone
Intuitive, free mobile app available on Google Play and iTunes App Store

Waterproof Case that Protects
Comes with its own waterproof case to withstand the elements

BENEFITS & USES

Connect-and-Detect Convenience
Pocket-sized, highly portable, and easy to use

See More Thermal Detail Where You Need it Most
Level and span controls let you isolate and capture the details that matter

Accurately Inspect Mechanical and Electrical Equipment
Diagnose and assess the problem source quickly

Safely Monitor Hazardous Environments
Evaluate potentially dangerous situations from a safe distance

Time of Day Won't Slow You Down
Safely examine any job site in daylight or total darkness

Easily Document and Share
Record images and video of industrial inspections for accurate documentation

TECHNICAL SUMMARY

SPECIFICATIONS	DESCRIPTION
Thermal Sensor	320 x 240 (76,800 pixels)
Detection Distance	6 inches to 1,800 feet
Field of View	32 Degree FOV
Temperature Range	-40°F to 626°F
Frame Rate	>15 Hz FastFrame
Focus	Adjustable Focus
Lens Material	Chalcogenide
Microbolometer	Vanadium Oxide
Thermal Sensitivity	< 70 mK
Spectral Range	7.5 - 14 Microns
User Interface	Free Seek Thermal Mobile App
Temp. Display Scale	Fahrenheit, Celsius, or Kelvin
Color Palettes	9 Options
Storage Media	Stores Directly to Smartphone
Battery	Low power provided by smartphone (280 mW)
Phone Compatibility	Top iPhone® and Android™ models

For support and user guides visit support.thermal.com

MOBILE APP

The free Seek Thermal app allows you to customize your experience, record images and videos directly to your smartphone, and easily share them. Product registration required through app at first-time set up.



USER INTERFACE

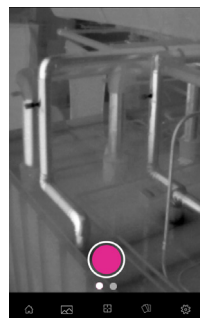
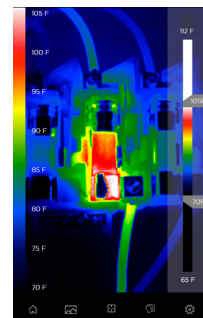


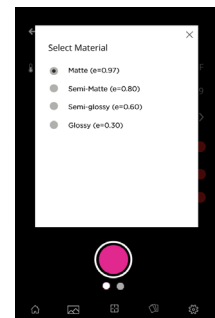
PHOTO & VIDEO

Capture and share thermal photos and videos



SPAN & LEVEL

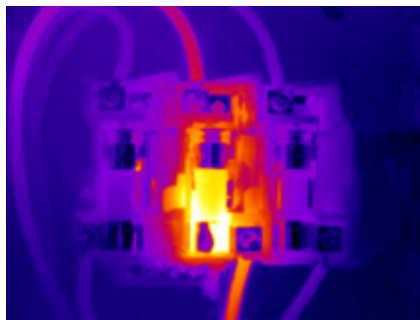
Isolate and capture the thermal details that matter



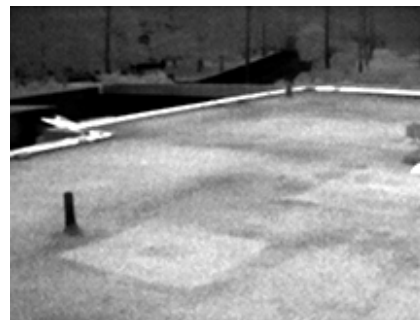
EMISSIVITY

Calibrate for reflective surfaces when accuracy is critical

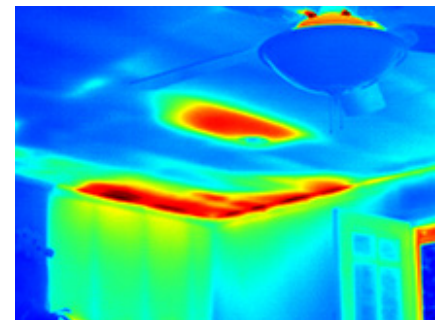
THERMAL APPLICATIONS



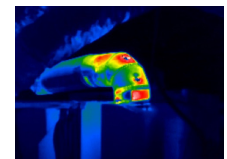
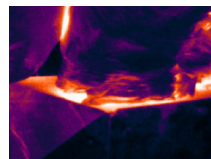
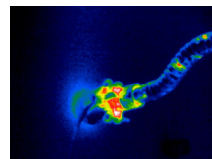
ELECTRICAL INSPECTION



ROOF INSPECTION



INSULATION & HVAC INSPECTION



Seek more at thermal.com

111 Castilian Drive, Santa Barbara, CA 93117 USA

Seek Thermal engineers, designs and manufactures high quality thermal imaging products and core platforms for consumer, commercial, and heat sensing IoT data applications. With headquarters in Santa Barbara, California, the global hub of thermal imaging innovation, the company has developed breakthrough thermal imaging camera cores that will enable a range of affordable products for use at home, work and play. For more information visit thermal.com and follow #seekthermal on Instagram and @seekthermal on Twitter.