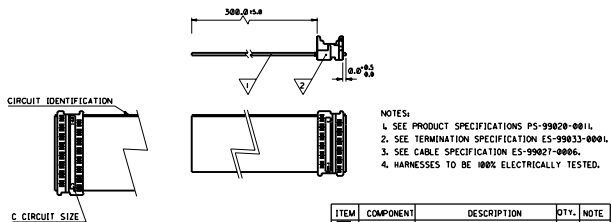


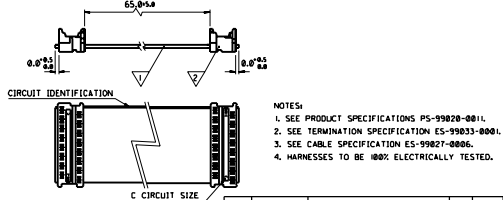
- NOTES:
1. SEE PRODUCT SPECIFICATIONS PS-99020-0011.
  2. SEE TERMINATION SPECIFICATION ES-99033-0001.
  3. SEE CABLE SPECIFICATION ES-99027-0006.
  4. HARNESES TO BE 100% ELECTRICALLY TESTED.

ITEM	COMPONENT	DESCRIPTION	QTY.	NOTE
▽	99026-0003	12 CCT 28 AWG STRANDED TINNED RIBBON CABLE	1	3, 4
▽	90327-0312	PICOFLEX IDT CONNECTOR	1	1, 2, 4



- NOTES:
1. SEE PRODUCT SPECIFICATIONS PS-99020-0011.
  2. SEE TERMINATION SPECIFICATION ES-99033-0001.
  3. SEE CABLE SPECIFICATION ES-99027-0006.
  4. HARNESES TO BE 100% ELECTRICALLY TESTED.

ITEM	COMPONENT	DESCRIPTION	QTY.	NOTE
▽	99026-0003	12 CCT 28 AWG STRANDED TINNED RIBBON CABLE	1	3, 4
▽	90327-0312	PICOFLEX IDT CONNECTOR	1	1, 2, 4



- NOTES:
1. SEE PRODUCT SPECIFICATIONS PS-99020-0011.
  2. SEE TERMINATION SPECIFICATION ES-99033-0001.
  3. SEE CABLE SPECIFICATION ES-99027-0006.
  4. HARNESES TO BE 100% ELECTRICALLY TESTED.

ITEM	COMPONENT	DESCRIPTION	QTY.	NOTE
▽	99026-0001	16 CCT 28 AWG STRANDED TINNED RIBBON CABLE	1	3, 4
▽	90327-0316	PICOFLEX IDT CONNECTOR	2	1, 2, 4

ORIGINAL ISSUE  
EQUIVALENTS  
CIRCUIT MARKING  
A2

2 x 1 ■  
C1081N 98/04/96  
MURRAN 98/04/96  
M.L.R. 98/04/96  
S9230167.DCN 92301-0067 50-92301-079 1 OF 1

PRE-RELEASE  
REFERENCE  
USE ONLY

MR1 - 50-92301-079					
MODIFICATION RECORD INDEX					
ECN	ISS	DATE	INIT.	NOTES AFFECTED	
000403	A	09.03.24	C.T.	1	TOL. REVISED IN CABLE LENGTH
000403	A1	09.03.26	C.T.	1	LENGTH REDUCED AND POLARITIES REVERSED.
000403	A2	09.04.06	C.T.	1	ORIGINAL ISSUE
<small>THE ABOVE RECORDS APPEAR IN THE CAD SYSTEM TO WHICH THE 3-D MODEL OF THE PART APPLIES. ANY CHANGES TO THE 3-D MODEL OF THE PART WILL AFFECT THE PART'S POSITION IN THE CAD SYSTEM.</small>					
MOLDEX EUROPE			REVISE ONLY ON CAD SYSTEM		
GROUP PLANE			DATE A2		

LEVEL CHART

1	17	33	49
2	18	34	50
3	19	35	51 LEVEL INDEX
4	20	36	52 RESERVED
5	21	37	53 RESERVED
6	22	38	54 /PROOF/typ - Obj/outline
7	23	39	55 DIMENSIONS
8	24	40	56 TABLES/CHARTS
9	25	41	57 REVISION TEXT & WHI
10	26	42	58 /NOFAR/typ - Eng/typ
11	27	43	59 /B71/ of /NOFAR/typ
12	28	44	60 /NOFAR/typ - german
13	29	45	61
14	30	46	62 /NOFAR/typ - french
15	31	47	63 RESERVED
16	32	48	