

Accessories

R95-180A



14-Pin Heavy Duty Socket

For use with the following NTE types:

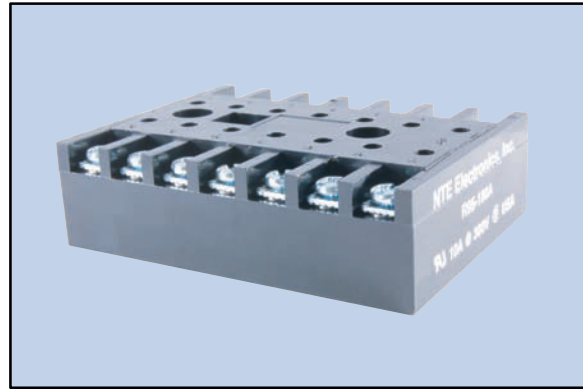
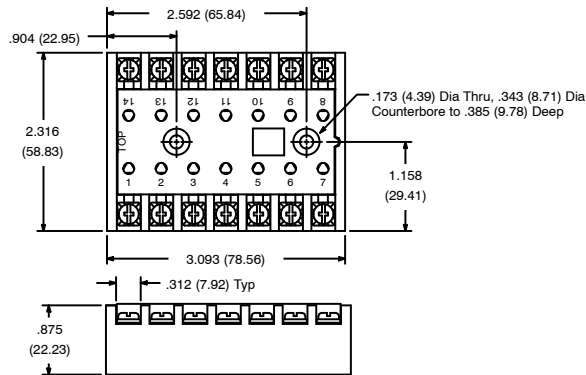
- R17 Series

Features

- Surface Mount
- With Pressure Clamp Screws

Electrical Rating:

300 Volts, 10 Amps



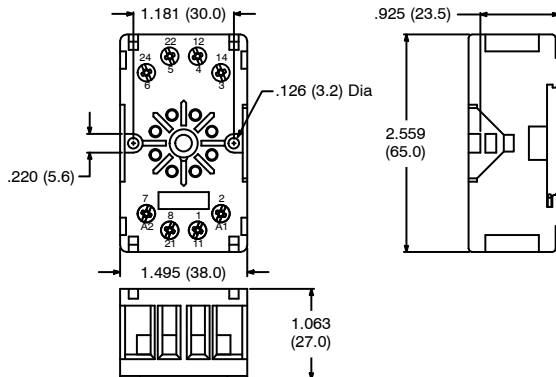
R95-181

Features

- DIN Rail Mount
- Finger Safe
- DPDT Applications

Electrical Rating:

300 Volts (UL Rating for US), 10 Amps



8-Pin Octal Socket

