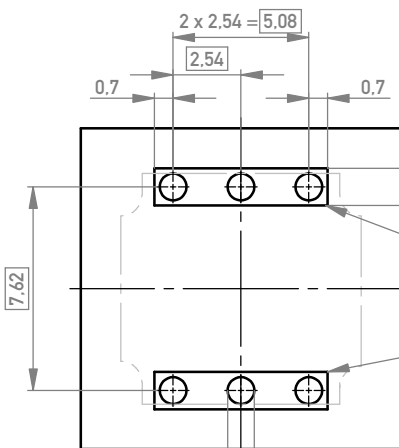


M 2:1

Leiterplattenbohrbild
PCB drillhole pattern



Dieser Bereich muß gleiches Potential auf der LP-Oberfläche haben
This area must have same electrical potential on surface of PCB

$\phi 0.05$

alle Löcher/
all holes

214788	M4
214801	M3
214802	6-32UNC
214803	8-32UNC
Id.-Nr.: Part No.	Gewinde Thread

Information:	Tolerances	 All Dimensions in mm	Scale	5:1
	All rights reserved. Only for Information. To ensure that this is the latest version of this drawing, please contact one of the ERNI companies before using.		Subject to modification without prior notice. Drawing will not be updated.	Designation SVA 6-polig TL Power Bug 6 pin TL
d Index	23.11.2020 Date	 www.ERNI.com	204821	
			Class	EPSVA
				I A3

Copyright by ERNI GmbH
Proprietary notice pursuant to ISO 9006 to be observed.