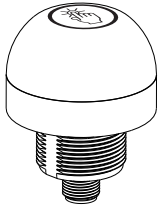


## Datasheet

Compact, Single-Point Devices for Error-Proofing of Bin-Picking Operations



Standard Model

- Rugged, cost-effective and easy-to-install solutions for error-proofing and parts-verification applications
- Compact devices are completely self-contained, no controller needed
- Illuminated dome provides a big, easy-to-see green, red, or yellow job light
- Waterproof IP69K per DIN 40050-9 construction for washdown environments
- Easy actuation, no force required
- 12 V DC to 30 V DC operation
- Can be actuated with bare hands or gloves



**WARNING:**

- **Do not use this device for personnel protection**
- Using this device for personnel protection could result in serious injury or death.
- This device does not include the self-checking redundant circuitry necessary to allow its use in personnel safety applications. A device failure or malfunction can cause either an energized (on) or de-energized (off) output condition.

## Models

Model <sup>1</sup>	Function	Output <sup>2</sup>	Connection	Indicators		
				Job	Mispick	Sense
K50APTGRYC3Q	<ul style="list-style-type: none"> <li>• Job light always illuminated with job input until touched</li> <li>• Touch activates output and overrides job light with sense light</li> <li>• Touch with inactive job input activates mispick light and activates output</li> </ul>	PNP, N.O.	Integral 5-pin M12 male quick disconnect	Green	Red	Yellow
K50RPTGRYC3Q		PNP, N.C.				
K50APTGRYC4Q	<ul style="list-style-type: none"> <li>• Job light always illuminated with job input until touched</li> <li>• Touch activates output and overrides job light with sense light until job input is removed</li> <li>• Touch with inactive job input activates mispick light for 5 seconds after touched and activates output</li> </ul>	PNP, N.O.		Green	Red	Yellow
K50RPTGRYC4Q		PNP, N.C.				

## Indicator and Output Behavior

Sensor Conditions		Indicator		Output Signal Status
		C3 Models	C4 Models	
Job input active	Hand/pick absent	On Green	On Green	Off
	Hand/pick present	On Yellow	On Yellow until job input is removed	On
No job input	Hand/pick absent	Off	Off	Off


<sup>1</sup> Integral 5-pin M12 quick disconnect models are listed.

- To order the 2 m (6.5 ft) PVC cable model, omit the suffix "Q" in the model number. For example K50APTGRYC3.
- To order the 150 mm (6 in) PUR cable model with a 5-Pin M12 quick disconnect, replace the suffix "Q" with "QPMA" in the model number. For example, K50APTGRYC3QPMA.
- To order the 150 mm (6 in) PVC cable model with a 5-pin M12 quick disconnect, replace the suffix "Q" with "QP" in the model number. For example, K50APTGRYC3QP.
- Models with a quick disconnect require a mating cordset.

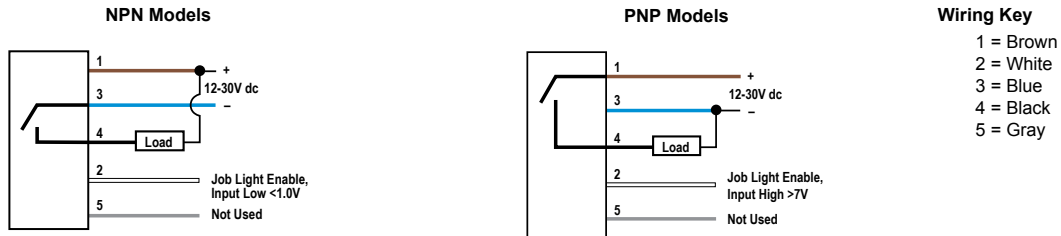
<sup>2</sup> PNP models only are listed. For other output types, contact Banner Engineering.



Sensor Conditions	Indicator		Output Signal Status
	C3 Models	C4 Models	
Hand/pick present	On Red	On Red for 5 seconds after hand/pick is removed	On

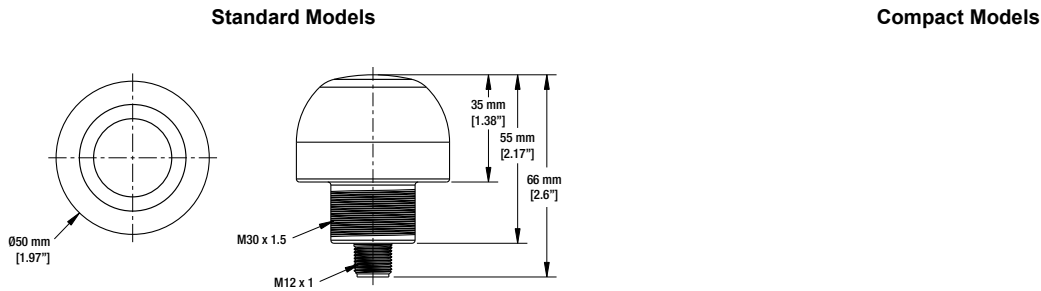
 **Note:** "C3" and "C4" models as referenced in the table pertain to a part of the product model number, immediately preceding the Q designation.

## Wiring Diagrams



**Note:** Cabled wiring diagrams are shown. Quick disconnect wiring diagrams are functionally identical.

## Dimensions



All measurements are listed in millimeters [inches], unless noted otherwise.

## Specifications

**Supply Voltage**

12 V DC to 30 V DC

**Supply Current**

< 75 mA max current at 12 V DC (exclusive of load)  
 < 50 mA max current at 30 V DC (exclusive of load)

**Supply Protection Circuitry**

Protected against reverse polarity and transient voltages

**Output Rating**

Maximum load: 150 mA  
 ON-state saturation voltage: < 2 V DC at 10 mA; < 2.5 V DC at 150 mA  
 OFF-state leakage current: <10 µA at 30 V DC

**Output Response Time**

50 milliseconds On  
 500 milliseconds leading edge Off

**Power-Up Delay**

300 milliseconds

**Indicator Lumens**

Color	Typical Wavelength	Typical Intensity (lm)
Green	525 nm	29
Red	625 nm	13
Yellow	591 nm	24

**Mounting**

M30 × 1.5 threaded base max. torque 4.5 N·m (40 in·lbf)

**Environmental Rating**

IP67, IP69K per DIN 40050-9.  
 Cabled models also meet IP69K if the cable and cable entrance are protected from high-pressure spray.

**Operating Conditions**

- 40 °C to +50 °C (-40 °F to +122 °F)
- 90% at 50 °C maximum relative humidity (non-condensing)

**Storage Conditions**

- 40 °C to +70 °C (-40 °F to +158 °F)

**Construction**

- Housing: polycarbonate
- Translucent dome: polycarbonate
- Mounting nut: PBT

**Connections**

- 5-pin integral M12 QD, 2 m (6.5 ft) PVC integral cable, 5-pin 150 mm (6 in) M12 PUR cable QD, or 5-pin 150 mm (6 in) M12 PVC cable QD

**Vibration and Mechanical Shock**

- All models meet Mil. Std. 202F requirements method 201A (vibration: 10 Hz to 60 Hz max., double amplitude 0.06 in. maximum acceleration 10G).
- Also meets IEC 947-5-2; 30G 11 ms duration, half sine wave.

**Certifications**



**Required Overcurrent Protection**



**WARNING:** Electrical connections must be made by qualified personnel in accordance with local and national electrical codes and regulations.

Overcurrent protection is required to be provided by end product application per the supplied table. Overcurrent protection may be provided with external fusing or via Current Limiting, Class 2 Power Supply. Supply wiring leads < 24 AWG shall not be spliced. For additional product support, go to [www.bannerengineering.com](http://www.bannerengineering.com).

Supply Wiring (AWG)	Required Overcurrent Protection (Amps)
20	5.0
22	3.0
24	2.0
26	1.0
28	0.8
30	0.5

Accessories

Cordsets

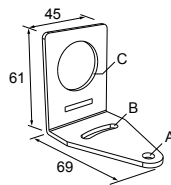
5-Pin Threaded M12 Cordsets—Single Ended				
Model	Length	Style	Dimensions	Pinout (Female)
MQDC1-501.5	0.5 m (1.5 ft)	Straight		<p>1 = Brown 2 = White 3 = Blue 4 = Black 5 = Gray</p>
MQDC1-506	2 m (6.5 ft)			
MQDC1-515	5 m (16.4 ft)			
MQDC1-530	9 m (29.5 ft)			
MQDC1-506RA	2 m (6.5 ft)	Right-Angle		
MQDC1-515RA	5 m (16.4 ft)			
MQDC1-530RA	9 m (29.5 ft)			

All measurements are listed in millimeters [inches], unless noted otherwise.

Brackets

**SMB30A**

- Right-angle bracket with curved slot for versatile orientation
- Clearance for M6 (1/4 in) hardware
- Mounting hole for 30 mm sensor
- 12-ga. stainless steel

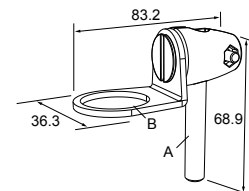


**Hole center spacing:** A to B=40

**Hole size:** A=ø 6.3, B= 27.1 x 6.3, C=ø 30.5

**SMB30FA**

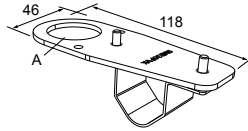
- Swivel bracket with tilt and pan movement for precise adjustment
- Mounting hole for 30 mm sensor
- 12-ga. 304 stainless steel
- Easy sensor mounting to extrude rail T-slot
- Metric and inch size bolt available



**Bolt thread:** SMB30FA, A= 3/8 - 16 x 2 in; SMB30FAM10, A= M10 - 1.5 x 50  
**Hole size:** B= ø 30.1

**SMB30FVK**

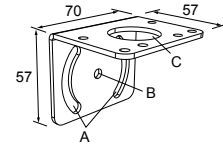
- V-clamp, flat bracket and fasteners for mounting to pipe or extensions
- Clamp accommodates 28 mm dia. tubing or 1 in. square extrusions
- 30 mm hole for mounting sensors



Hole size: A=  $\varnothing$  31

**SMB30MM**

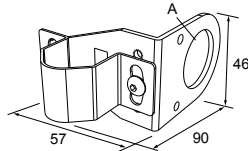
- 12-ga. stainless steel bracket with curved mounting slots for versatile orientation
- Clearance for M6 (1/4 in) hardware
- Mounting hole for 30 mm sensor



Hole center spacing: A = 51, A to B = 25.4  
Hole size: A = 42.6 x 7, B =  $\varnothing$  6.4, C =  $\varnothing$  30.1

**SMB30RAVK**

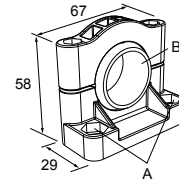
- V-clamp, right-angle bracket and fasteners for mounting sensors to pipe or extrusion
- Clamp accommodates 28 mm dia. tubing or 1 in. square extrusions
- 30 mm hole for mounting sensors



Hole size: A =  $\varnothing$  30.5

**SMB30SC**

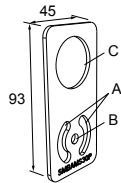
- Swivel bracket with 30 mm mounting hole for sensor
- Black reinforced thermoplastic polyester
- Stainless steel mounting and swivel locking hardware included



Hole center spacing: A= $\varnothing$  50.8  
Hole size: A= $\varnothing$  7.0, B= $\varnothing$  30.0

**SMBAMS30P**

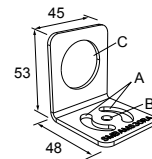
- Flat SMBAMS series bracket
- 30 mm hole for mounting sensors
- Articulation slots for 90°+ rotation
- 12-ga. 300 series stainless steel



Hole center spacing: A=26.0, A to B=13.0  
Hole size: A=26.8 x 7.0, B= $\varnothing$  6.5, C= $\varnothing$  31.0

**SMBAMS30RA**

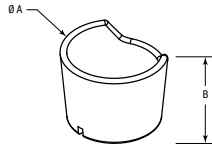
- Right-angle SMBAMS series bracket
- 30 mm hole for mounting sensors
- Articulation slots for 90°+ rotation
- 12-ga. (2.6 mm) cold-rolled steel



Hole center spacing: A=26.0, A to B=13.0  
Hole size: A=26.8 x 7.0, B= $\varnothing$  6.5, C= $\varnothing$  31.0

**TC-K50-CL**

- Touch cover



Diameter: A = 67 mm  
Height: B = 42.5 mm

**Banner Engineering Corp. Limited Warranty**

Banner Engineering Corp. warrants its products to be free from defects in material and workmanship for one year following the date of shipment. Banner Engineering Corp. will repair or replace, free of charge, any product of its manufacture which, at the time it is returned to the factory, is found to have been defective during the warranty period. This warranty does not cover damage or liability for misuse, abuse, or the improper application or installation of the Banner product.

**THIS LIMITED WARRANTY IS EXCLUSIVE AND IN LIEU OF ALL OTHER WARRANTIES WHETHER EXPRESS OR IMPLIED (INCLUDING, WITHOUT LIMITATION, ANY WARRANTY OF MERCHANTABILITY OR FITNESS FOR A PARTICULAR PURPOSE), AND WHETHER ARISING UNDER COURSE OF PERFORMANCE, COURSE OF DEALING OR TRADE USAGE.**

This Warranty is exclusive and limited to repair or, at the discretion of Banner Engineering Corp., replacement. **IN NO EVENT SHALL BANNER ENGINEERING CORP. BE LIABLE TO BUYER OR ANY OTHER PERSON OR ENTITY FOR ANY EXTRA COSTS, EXPENSES, LOSSES, LOSS OF PROFITS, OR ANY INCIDENTAL, CONSEQUENTIAL OR SPECIAL DAMAGES RESULTING FROM ANY PRODUCT DEFECT OR FROM THE USE OR INABILITY TO USE THE PRODUCT, WHETHER ARISING IN CONTRACT OR WARRANTY, STATUTE, TORT, STRICT LIABILITY, NEGLIGENCE, OR OTHERWISE.**

Banner Engineering Corp. reserves the right to change, modify or improve the design of the product without assuming any obligations or liabilities relating to any product previously manufactured by Banner Engineering Corp. Any misuse, abuse, or improper application or installation of this product or use of the product for personal protection applications when the product is identified as not intended for such purposes will void the product warranty. Any modifications to this product without prior express approval by Banner Engineering Corp will void the product warranties. All specifications published in this document are subject to change; Banner reserves the right to modify product specifications or update documentation at any time. Specifications and product information in English supersede that which is provided in any other language. For the most recent version of any documentation, refer to: [www.bannerengineering.com](http://www.bannerengineering.com).

For patent information, see [www.bannerengineering.com/patents](http://www.bannerengineering.com/patents).