

Han Eco

Identification

Cable entry

Clamping range (mm)

Part number

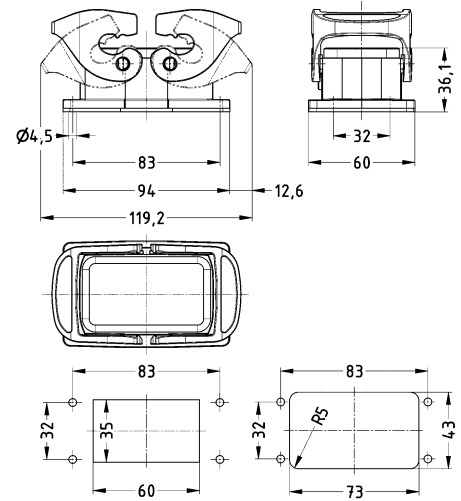
Drawing (dimensions in mm)

Han-Eco® B,
Bulkhead mounted housing,
Without frame,
IP66



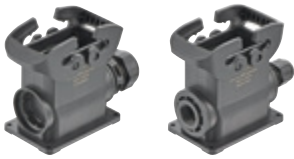
Please order frame 19 43 010 0001 separately.

19 43 010 0310



Panel cut out
Front mounting / Rear mounting

Han-Eco® B,
Surface mounted housing,
With integrated cable gland,
Side entry,
IP66



1x M20
1x M25
1x M32
1x M40
2x M20
2x M25
2x M32

6 ... 13
9 ... 17
13 ... 21
16 ... 28
6 ... 13
9 ... 17
13 ... 21

19 43 110 0230
19 43 110 0231
19 43 110 0232
19 43 110 0233
19 43 110 0270
19 43 110 0271
19 43 110 0272

