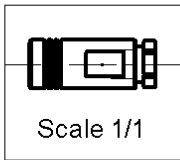
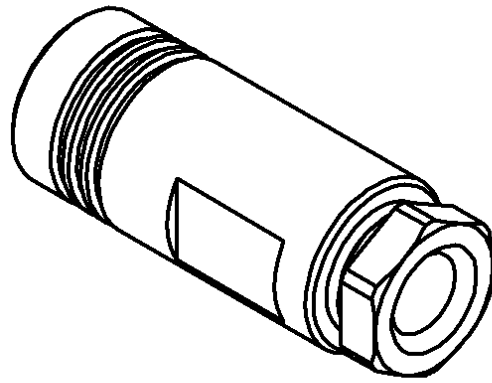
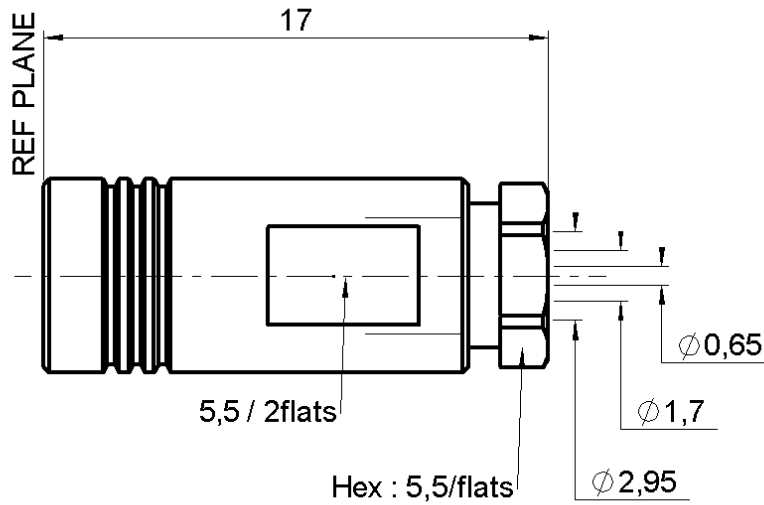


STRAIGHT PLUG CLAMP TYPE

R114.005.133

CABLE 2.6/50+75 S

Series : SMB



All dimensions are in mm.



COMPONENTS	MATERIALS	PLATINGS (µm)
BODY	BRASS	GOLD 0.2 OVER NICKEL 2
CENTER CONTACT	BERYLLIUM COPPER	GOLD 1.3 OVER NICKEL 2
OUTER CONTACT	BERYLLIUM COPPER	GOLD 0.5 OVER NICKEL 2
INSULATOR	PTFE	
GASKET	-	
OTHERS PARTS	BRASS	GOLD 0.2 OVER NICKEL 2
-	-	-
-	-	-

Issue : 0039 B

In the effort to improve our products, we reserve the right to make changes judged to be necessary.



STRAIGHT PLUG CLAMP TYPE

R114.005.133

CABLE 2.6/50+75 S

Series : SMB

PACKAGING

Standard	Unit	Other
100	'W' option	Contact us

SPECIFICATION

ELECTRICAL CHARACTERISTICS

Impedance		50 Ω
Frequency		0-4 GHz
VSWR	1.25 +	0.040 x F(GHz) Maxi
Insertion loss		0.25 √F(GHz) dB Maxi
RF leakage	- (57 - F(GHz)) dB mini
Voltage rating		335 Veff Maxi
Dielectric withstanding voltage		1000 Veff mini
Insulation resistance		1000 MΩ mini

CABLE ASSEMBLY

Stripping	a	b	c	d	e	f
mm	2.00	1.00	4.00	3.18	2.00	0.00

Assembly instruction :

Recommended cable(s)

RG 179

RG 188

RG 187

KX 22A

RG 316

MECHANICAL CHARACTERISTICS

Center contact retention		
Axial force – Mating end		10 N mini
Axial force – Opposite end		10 N mini
Torque		NA N.cm mini

Cable retention

- pull off

110 N mini

- torque

NA N.cm

TOOLING

Part Number	Description	Hexagon
.	.	.

Recommended torque

Mating		NA N.cm
Panel nut		NA N.cm
Clamp nut		63 N.cm
A/F clamp nut		5.500 mm

OTHERS CHARACTERISTICS

Mating life		500 Cycles mini
Weight		3.000 g

ENVIRONMENTAL

Operating temperature		-65/+165 °C
Hermetic seal		NA Atm.cm3/s
Panel leakage		NA

Issue : 0039 B

In the effort to improve our products, we reserve the right to make changes judged to be necessary.



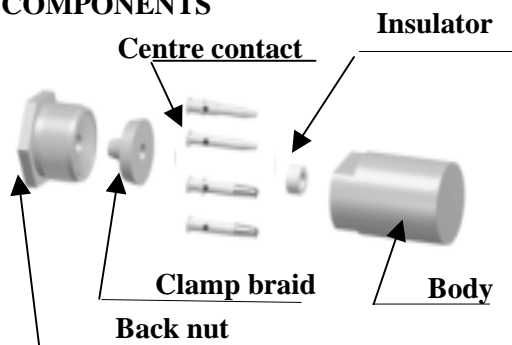
STRAIGHT PLUG CLAMP TYPE

R114.005.133

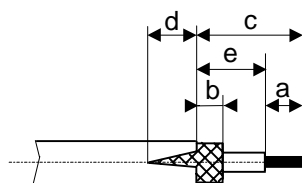
CABLE 2.6/50+75 S

Series : SMB

COMPONENTS

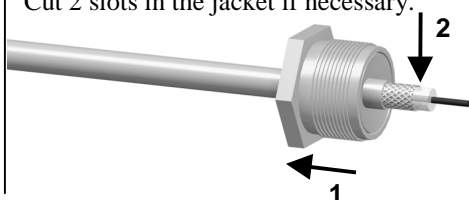


STRIPPING DIMENSIONS



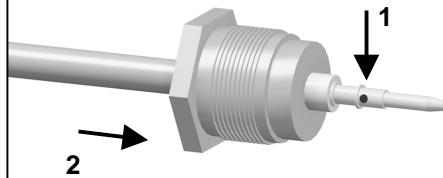
1

Slide the back nut onto the cable.
Strip the cable.
Cut 2 slots in the jacket if necessary.



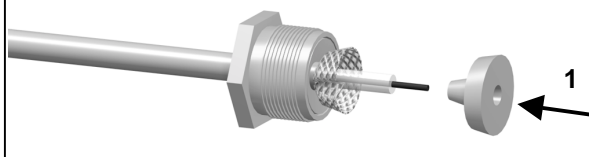
4

Solder the centre contact onto the inner conductor.
Slide the back nut over the cable assembly.



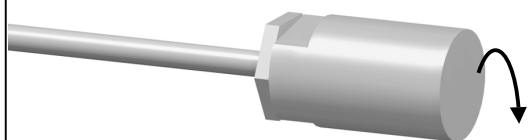
2

Slide the clamp braid sleeve between the cable dielectric and the braid.



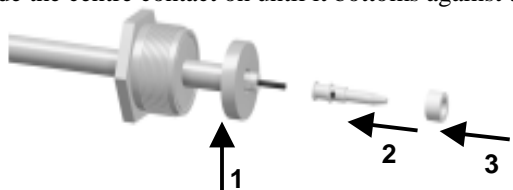
5

Screw sub-assembly into the connector body with the adapted wrench.



3

Cut the braid flush with the clamp braid sleeve.
Slide the spacer onto the cable.
Slide the centre contact on until it bottoms against the cable dielectric.



Issue : 0039 B

In the effort to improve our products, we reserve the right to make changes judged to be necessary.

