

CMM-SST | Hinges

Stainless steel

CMM-BL | Hinges

Aluminium

- 1
- 2
- 3
- 4
- 5
- 6
- 7
- 8
- 9
- 10
- 11
- 12
- 13
- 14
- 15
- 16
- 17
- 18

METRIC

INOX
STAINLESS
STEEL

RoHS

METRIC

RoHS

MATERIAL
AISI 316 stainless steel.

COLOUR
Natural, electropolished finish.

ROTATING PIN
AISI 316 stainless steel.

STANDARD EXECUTION
Pass-through holes for countersunk head screws.

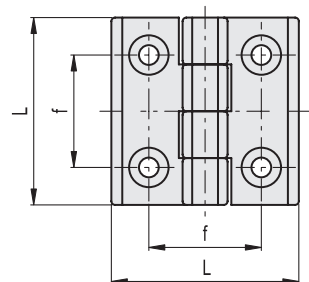
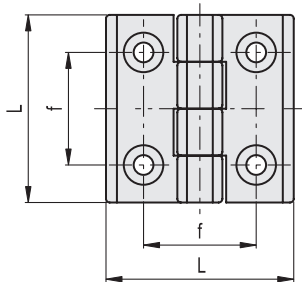
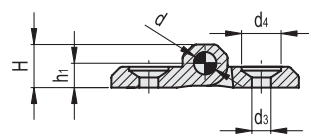
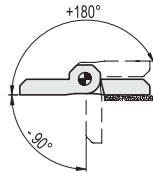
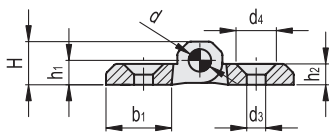
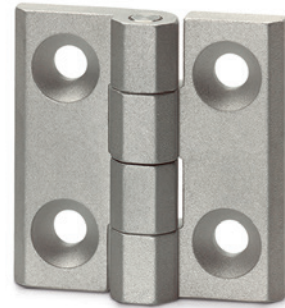
ROTATION ANGLE (APPROXIMATE VALUE)
Max 270° (-90° and +180° being 0° the condition where the two interconnected surfaces are on the same plane).
Do not exceed the rotation angle limit so as not to prejudice the hinge mechanical performance.

MATERIAL
Aluminium, matte finish.

ROTATING PIN
AISI 303 stainless steel.

STANDARD EXECUTION
Pass-through holes for countersunk head screws.

ROTATION ANGLE (APPROXIMATE VALUE)
Max 270° (-90° and +180° being 0° the condition where the two interconnected surfaces are on the same plane).
Do not exceed the rotation angle limit so as not to prejudice the hinge mechanical performance.



Conversion Table	
1 mm = 0.039 inch	
mm	inch
30	1.18
40	1.57
50	1.97
60	2.36

INOX
STAINLESS
STEEL

METRIC

METRIC

Code	Description	L	d3	d4	f	H	h1	h2	b1	d	Δ
428412	CMM-SST-30-SH-4	30	4.5	8.5	18	7.5	4.5	4	10.5	3	11
428501	CMM-SST-40-SH-5	40	5.5	10.5	25	9	5.5	5	14	4	41
428601	CMM-SST-50-SH-6	50	6.5	12.5	30	11.5	6.5	6	18	6	81
428701	CMM-SST-60-SH-8	60	8.5	16.5	36	15	8.5	8	21.5	8	172

Code	Description	L	d3	d4	f	H	h1	d	Δ
428431	CMM.30-BL-SH-4	30	4.6	9.5	18	7.5	4.5	3	12
428531	CMM.40-BL-SH-5	40	5.3	10.2	25	9	5	4	24
428631	CMM.50-BL-SH-6	50	6.4	12.5	30	11.5	6	6	43
428731	CMM.60-BL-SH-8	60	8.3	16.2	36	15	8	8	85

Hinges and accessories