



DTB-3X-W

47W

3ch



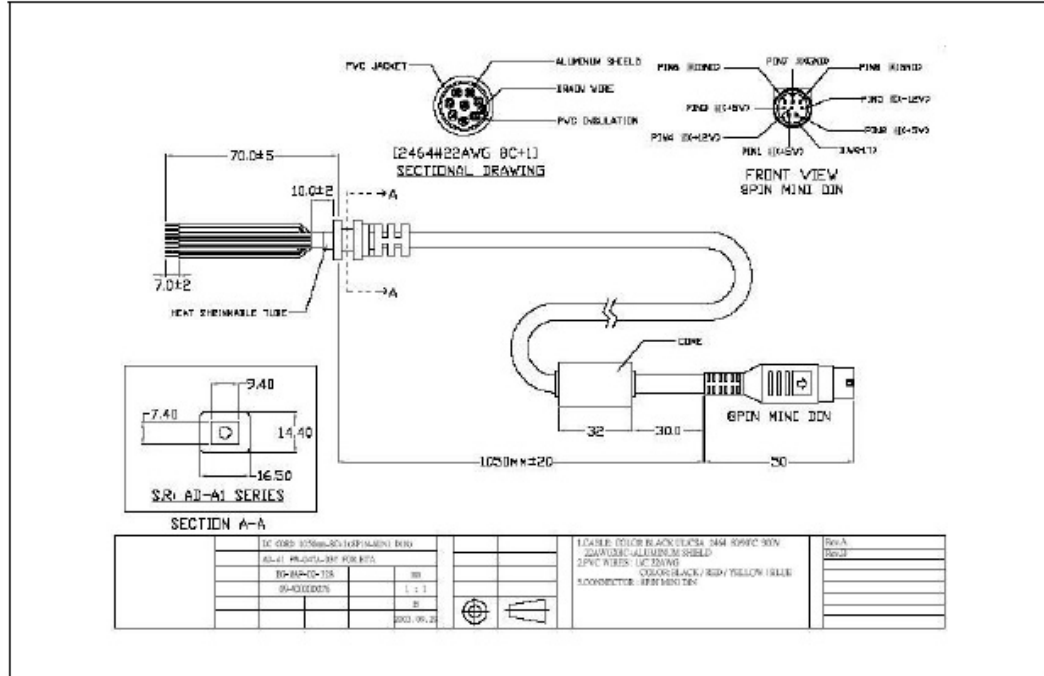
FEATURES:

- 3-pole IEC320-C14 AC inlet, Class I
- Black color plastic enclosed case
- 2 year warranty
- Triple Output



MODEL/CHANNEL		Unit	DTB47-3X-W			
OUTPUT	Output Voltage Min	Vdc	+5	+12	-12	
	Output Load Max	A	7	1.5	0.3	
	Output Load Min	A	0.5	0.1	0.05	
	Ripple & Noise(max) *3	mV	50	120	120	
	Output Limit Max	V	5.25	12.6	-13.2	
	Output Limit Min	V	4.85	11.4	-10.8	
	Hold Up Time	-	115VAC (or 230VAC)			
INPUT	Input Voltage	Vac	90~264VAC			
	Input Current	A	1.0A MAX. (RMS)			
	Line Frequency	Hz	47Hz to 63Hz			
	Inrush Current Range	A	30A MAX. (COLD START AT MAX. LOAD & 110VAC 60A MAX. (COLD START AT MAX. LOAD & 220VAC INPUT)			
	Efficiency	%	70% AC normal input & the Maximum load			
Protection	Over current Protection	-	+5 Overvoltage Range 5.6 to 6.5			
	Over Load Protection	-	+160% MAX			
	Short circuit protection	-	+5V to +12V			
Environmental Agencies	Safety	-	UL 60950-1	CSA C22.2-No.60950-1	TUV EN60950-1	CB IEC 60950-1
	EMC	-	CISPR22 Class B	EN 55022 Class B	FCC CERTIFICATE	CE
Dielectric Withstand	Primary to Secondary	-	3000VAC for 60 Sec.			
	Primary to Frame Ground	-	1500VAC for 60 Sec.			
	Secondary to Ground	-	500VAC for 60 Sec.			
Environment	Operating Temperature	-	0 to +60°C(Derate linearly 2.5% per °C from 41 to 60°C)			
	Operating Humidity	-	20 to 90% non-condensing			
	Storage Temperature	-	-10°C to +70°C			
	MTBF	-	>80,000 hours at full load and 25°C ambient temperature			
Dimension	Size(WxHxD) / Weight	mm/g	132(L) mm x 69(W) mm x 40(H) mm/0.42 kgs			

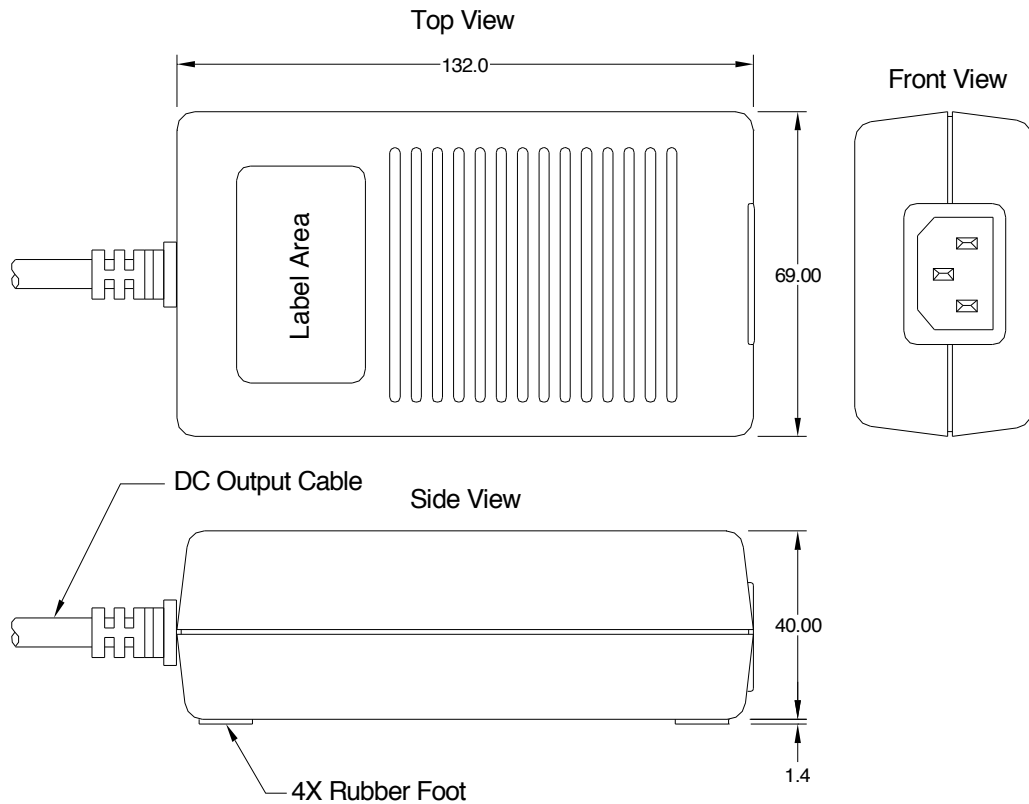






MECHANICAL DIMENSIONS

47W



- Note:
1. AC Inlet : IEC320-C14
 2. Plastic Case Color : Black
 3. Tolerance : $\pm 0.5\text{mm}$
 4. Unit : mm

