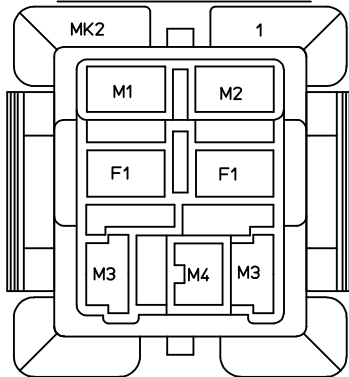
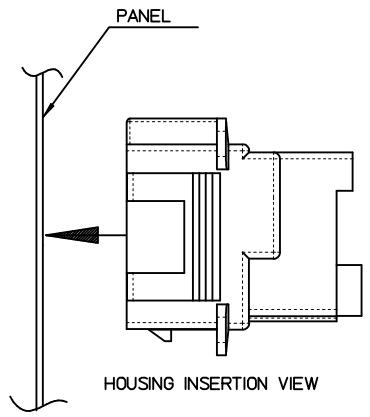
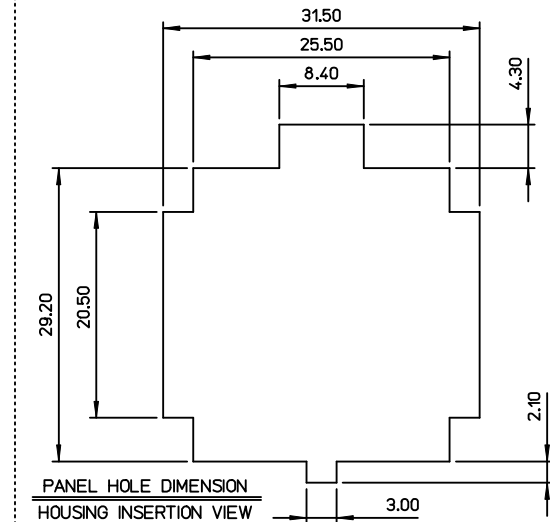
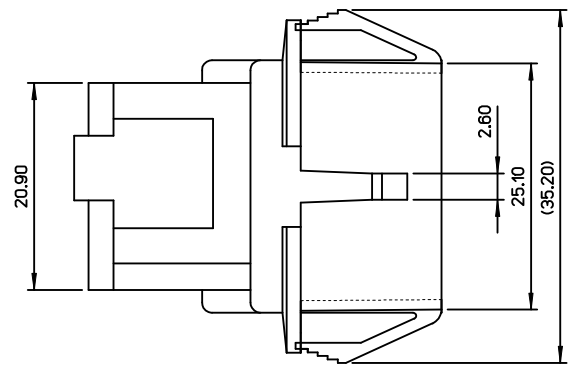
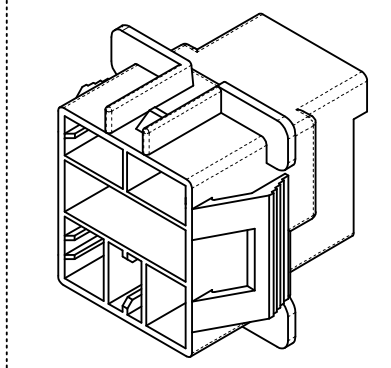
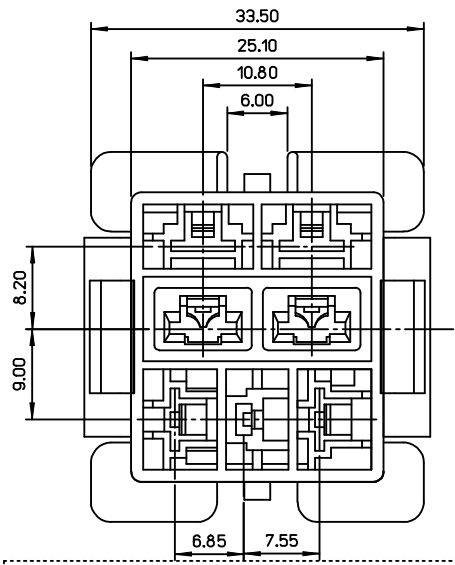
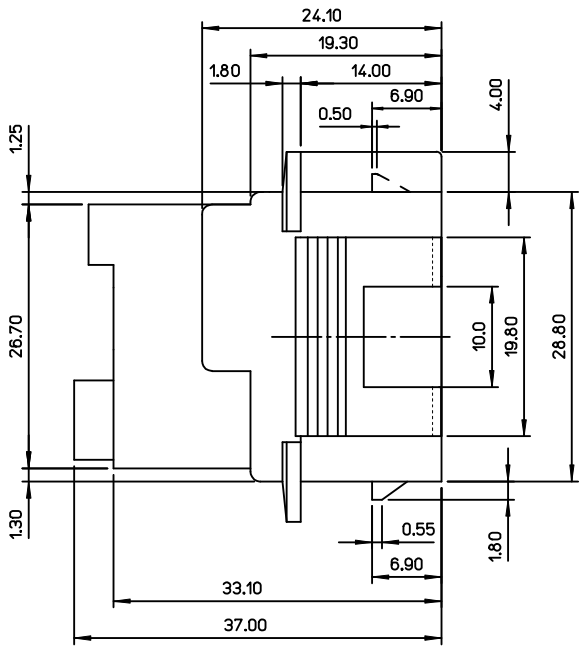


TERMINAL PATTERN



- M1 TERMINAL : 35453-9\*02
- M2 TERMINAL : 35452-9\*02
- M3 TERMINAL : 35725-1810/1910/3010
- M4 TERMINAL : 35765-0110/0210
- F1 TERMINAL : 35725-5\*10
- M = MALE TERMINAL
- F = FEMALE TERMINAL



NOTES

1. MATERIAL : PET/PC, NO GLASS FILLED, UL94V-0; COLOR : NATURAL
2. PRODUCT SPECIFICATION : PS-35546-001
3. PACKING SPECIFICATION : PK-35546-001
4. MATED HOUSING : 35547-0309  
35547-0409

REVISED	IEC NO: KOR2015-0152	2015/06/23	QUALITY SYMBOLS
	DRWN: SCHONG03	2015/06/23	
	CHKD: SHCHU	2015/06/23	
	APPR: YSKIM02	2015/06/30	
REV	DESCRIPTION		

GENERAL TOLERANCES (UNLESS SPECIFIED)	
mm	INCH
4 PLACES	± --- ± ---
3 PLACES	± --- ± ---
2 PLACES	± 0.30 ± ---
1 PLACE	± 0.30 ± ---
0 PLACE	± --- ± ---
ANGULAR ± 3 °	
DRAFT WHERE APPLICABLE MUST REMAIN WITHIN DIMENSIONS	

DIMENSION STYLE	
MM ONLY	
DRAWN BY	DATE
JB. JIN	2012/10/25
CHECKED BY	DATE
SH. CHU	2012/10/25
APPROVED BY	DATE
YSKIM02	2012/12/27
MATERIAL NO.	
355460709	

SCALE	DESIGN UNITS	THIRD ANGLE PROJECTION
2:1	METRIC	
TITLE		
.250 MULTI W-T-W CONN. RECEPTACLE HOUSING 7P (FOR GWIT)		
DOCUMENT NO.		SHEET NO.
SD-35546-003		1 OF 1
THIS DRAWING CONTAINS INFORMATION THAT IS PROPRIETARY TO MOLEX INCORPORATED AND SHOULD NOT BE USED WITHOUT WRITTEN PERMISSION		