

ECG[®]

Surge Protectors and Digital Timer

NEW!

*New Energy Saving
Power Center and
Digital Timer*

NEW!



NTE[®]
ELECTRONICS, INC.

EMF™-3 Three Outlet Surge Protector with 2 USB Chargers



- 15 Amp/125V/1875W
- Converts one grounded outlet of similar rating to 3 grounded outlets
- For indoor use only
- Appropriate for use in homes, offices, businesses and more
- Adapter spaced outlet
- LED Indicates Active Surge Protection

USB CHARGER FOR:

- Cameras
- Cell Phones
- Tablets
- MP3 Players

PLUG-IN PROTECTION FOR:

Office

- Security Systems
- Copy Machines
- Computers
- Modems
- Fax Machines
- Answering Machines

Institutional/Industrial

- Lab Equipment
- Amplifiers
- Film/Video Equipment

Industrial

- Process Controls
- Electrical Hand Tools

Residential

- TVs
- DVD Players
- Stereos
- Satellite Receivers
- Video Games
- Computers



EMF-3

SPECIFICATIONS

125V Outlet Specifications

- 3 Line Protection:**..... (hot, neutral, ground)
Energy Dissipation: 1050 Joules
Electrical Rating:..... 125V/15A/1875W, 60Hz
Clamping Voltage:..... 400V
Maximum Spike Current:..... 19,500 Amps
Maximum Surge Voltage:..... 6000V
EMI / RFI Noise Reduction:..... up to 20dB from 150Khz to 30Mhz
Response Time:..... less than 1 nanosecond

USB Specifications

- USB Power Adapter Input:** AC 125V, 0.2A, 50/60Hz
Output: DC 5V, 2.0A
Over Voltage Protection: DC 10V

NOTE: This surge protector is not a lightning arrestor and may not protect against direct lightning strikes. Use indoors only in a dry location.

EMF™-61, EMF-63A, EMF-65A, EMF-67

- Single or Full 3-Mode Surge Protection
- EMI/RFI Noise Filter
- Phone Line Protection (EMF-65A)
- Nanosecond Response Time
- Illuminated Power Switch
- Surge Protection Indicator
- Resettable Switch
- Keyhole Slot Mounting

EMF™ Surge Protectors are effective protection against transient AC line voltage spikes that can damage electronic equipment or interfere with their operation. These spikes are shunted through protecting MOVs where they are dissipated. All models, with the exception of the EMF-61, feature full 3-mode surge protection: **HOT TO NEUTRAL**, **HOT TO GROUND**, and **NEUTRAL TO GROUND**.

The EMF-61 provides basic single mode protection from HOT TO NEUTRAL lines.

The EMF-65A can also be used for phone line protection. They will protect against transient voltage spikes from **RING (Red) TO GROUND** and **TIP (Green) TO GROUND**.

All EMF Surge Protectors are controlled by an illuminated power switch and protected against overloads by a resettable circuit breaker.

PLUG-IN PROTECTION FOR:

Office

- Security Systems
- Copy Machines
- Computers

Industrial

- Process Controls
- Electrical Hand Tools

Institutional/Industrial

- Lab Equipment
- Amplifiers
- Film/Video Equipment

Residential

- TVs
- DVD Players
- Stereos
- Satellite Receivers
- Video Games
- Computers

Phone Line Protection (EMF-65A Only)

- Modems
- Fax Machines
- Cordless Phones
- Telephones
- Answering Machines



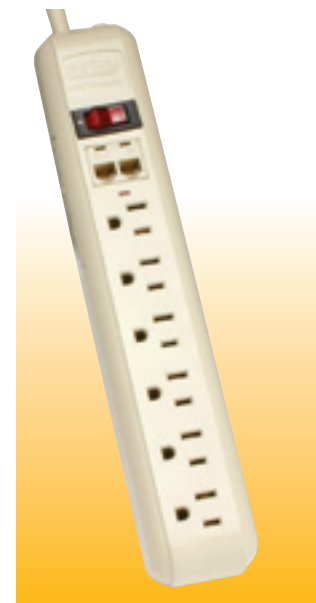
EMF-61

90° Rotated Outlets
Single Mode Surge Protection
6 ft. Cord



EMF-63A

Metal Case
EMI/RFI Noise Filter
Surge Protection Indicator
3-Mode Surge Suppression
6 ft. Cord



EMF-65A

Phone Line Protection
EMI/RFI Noise Filter
Surge Protection Indicator
3 Mode Surge Suppression
6 ft. Cord



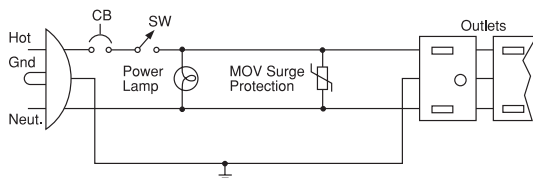
EMF-67

90 Degree Rotated Outlets
with Safety Slide Covers
EMI/RFI Noise Filter
3 Mode Surge Suppression
6 ft. Cord

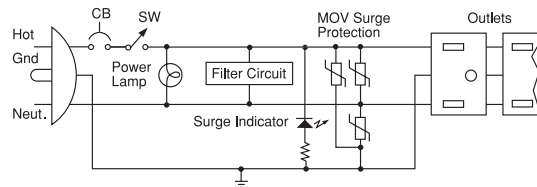
EMF™-61, EMF-63A, EMF-65A, EMF-67 Specifications

	EMF-61	EMF-63A	EMF-65A	EMF-67
General				
Case, Heavy Duty	Plastic	Metal	Plastic	Plastic
Number of Outlets	6	6	6	7
Surge Protection Indicator	---	LED	LED	LED
Operating Current and Voltage (1875 W Max.)	15A, 120 VAC	15A, 125 VAC	15A, 120 VAC	15A, 125 VAC
Circuit Breaker, Resettable	15A	15A	15A	15A
Clamping Response Time	<1 nSec.	<1 nSec.	<1 nSec.	<1 nSec.
AC Power Section				
Surge Protection (MOVs)	Hot to Neut.	Hot to Neut. Hot to Gnd Neut. to Gnd	Hot to Neut. Hot to Gnd Neut. to Gnd	Hot to Neut. Hot to Gnd Neut. to Gnd
Clamping Voltage	200 - 330V	400V	400V	400 - 500V
Energy Absorption (Max.)	140 Joules	1,050 Joules	210 Joules	1,050 Joules
Peak Surge Current	4500A	19,5000A	7000A	19,5000A
EMI/RFI Noise Attenuation		20 dB	5-40 dB	20 dB
Telecommunications Section				
Surge Protection (MOVs)			Ring to Gnd Tip to Gnd	
Clamping Voltage @ 1mA			245V	
@ 10A			450V	
Energy Absorption (Max.)			20 Joules	
Peak Surge Current			1200A	

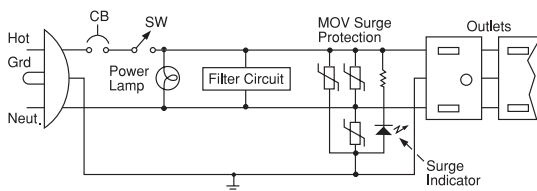
EMF-61



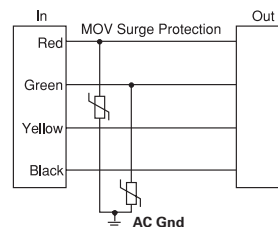
EMF-63A, EMF-67



EMF-65A



Telephone Line Protection (EMF-65A)

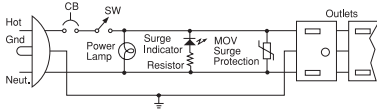


EMF™-60 6-Outlet Surge Protector with Circuit Breaker Protection

- 15 Amp/125V/1875W
- Resettable Circuit Breaker
- 6 Foot, 14 Gauge, Grounded Power Cord
- Surge Indicator Light
- On/Off Lighted Master Switch
- 6 Grounded AC Outlets
- Durable, Fire-retardant Plastic Construction

EMF Surge Protectors are effective protection against transient AC line voltage spikes that can damage electronic equipment or interfere with their operation. These spikes are shunted through a protecting MOV where they are dissipated. The EMF-60 provides basic single mode protection from **HOT TO NEUTRAL LINES**.

The EMF-60 is useful in home or business environments, and will protect valuable equipment from power surges that may be caused by lightning strikes, appliances such as air conditioners or refrigerators, machinery, or line switching.



PLUG-IN PROTECTION FOR:

Office

- Security Systems
- Copy Machines
- Computers
- Modems
- Fax Machines
- Answering Machines

Industrial

- Process Controls
- Electrical Hand Tools

Residential

- TVs
- DVD Players
- Stereos
- Satellite Receivers
- Video Games
- Computers

Institutional/Industrial

- Lab Equipment
- Amplifiers
- Film/Video Equipment

SPECIFICATIONS

- Operating Current and Voltage:** 15 Amp/125V/1875W
Clamping Voltage: 400 Volts
Maximum Surge Dissipation:.. 140 Joules
Maximum Spike Current:..... 4500 Amps
Response Time:..... <1 nanosecond
Maximum Surge Voltage:..... 6000 Volts



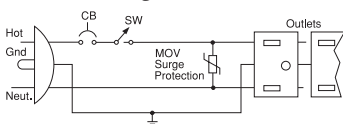
EMF-60

EMF™-41 4-Outlet Surge Protector with Circuit Breaker Protection

- 15 Amp/125V/1875W
- Resettable Circuit Breaker
- 4 Ground AC Outlets
- 6 Foot, 14 Gauge, Grounded Power Cord
- Flame Retardant Plastic Construction
- Keyhole Slot Mounting

EMF Surge Protectors are effective protection against transient AC line voltage spikes that can damage electronic equipment or interfere with its operation. These spikes are shunted through a protecting MOV where they are dissipated. The EMF-41 provides basic single mode protection from **HOT TO NEUTRAL LINE**.

The EMF-41 is useful in the home or business environments. It will protect valuable equipment from power surges that may be caused by lightning strikes, appliances such as air conditioners or refrigerators, machinery, or line switching.



PLUG-IN PROTECTION FOR:

Office

- Security Systems
- Copy Machines
- Computers
- Modems
- Fax Machines
- Answering Machines

Residential

- TVs
- DVD Players
- Stereos
- Satellite Receivers
- Video Games
- Computers

Institutional/Industrial

- Lab Equipment
- Amplifiers
- Film/Video Equipment

Industrial

- Process Controls
- Electrical Hand Tools

SPECIFICATIONS

- Operating Current and Voltage:** 15 Amp/125V/1875W
Clamping Voltage: 400 Volts
Maximum Surge Dissipation:.. 70 Joules
Maximum Spike Current:..... 4500 Amps
Response Time:..... <1 nanosecond
Maximum Surge Voltage:..... 6000 Volts
Dimensions: 7¾" (L) x 2" (W) x 1⅛" (H)



EMF-41

EMF-8ES Energy Saving Power Center Surge Protector

- Automatically turns computer, TV, and other peripherals on and off
- Protects valuable equipment against surges and spikes
- Provides the highest level of equipment protection during damaging power surges
- Reduces noise interference
- Indicates if protection is still active
- Reset/off switch with built in 15 Amp circuit breaker
- Highest quality 6 foot power cord available to reduce the risk of electrical shock
- C (UL) US Listed
- Surge/Power on LED Indicator and more!

This is a must have product for those wanting to go green!

This environmentally friendly, 8 outlet Surge Protector saves up to 55% of energy used by eliminating idle current!

EMF-8ES features one master outlet that controls four connected outlets, and also has three separate transformer spaced outlets as well.

Plug your computer or television into the master outlet and plug everything else that you want to save energy into the four "connected by master" outlets. These four "connected by master" outlets turn on or off via the master outlet. This allows you to save energy and also helps to reduce greenhouse gasses!

SPECIFICATIONS

- Electrical rating:**.....125 V, 60 Hz, 15 A, 1875 W
Joule rating:1050 J
Max. peak pulse current:.....19,500 A
Max. surge clamping voltage:...400 V (L - N, L - G, N - G)
Max. surge pulse voltage:.....6000 V
Response time:faster than 1 nanosecond
EMI / RFI noise rejection:up to 20 dB from 150 KHz to 30 MHz
Overload protection:125 V, 15 A circuit breaker



EMF-8ES

EMF-10 Digital Timer

- Turn lights on automatically at dusk and off at dawn
- Set timer for desired number of hours that your lights are on
- Automatic control of electronic equipment
- Weatherproof
- C (UL) US listed
- Auto Reset
- Overload protection
- 24 hour repetition
- Digital power indicator light and more!

This great new product allows the user to easily choose time settings ranging from one to ten hours (in one hour increments) or from dusk to dawn!

Featuring a photocell function, EMF-10 allows you to control all of your outdoor and indoor lighting and other electronic equipment as well!

Simply select your desired setting via the programmable selector button and EMF-10 will do the rest.

SPECIFICATIONS

- Input:**AC125V/60Hz
Output:15 Amps Max.
 1875 Watts
Operating Temperature Range: -22°F to +158°F



EMF-10



Distributed By:

NTE Electronics, Inc., 44 Farrand Street, Bloomfield, NJ 07003-2597
 For more information, call 973-748-5089 or visit www.nteinc.com