


GDM Series Valve Connectors, Type A, Field Attachable Female Connectors, UL, with/without Protection Circuit

Technical Information

Product Description		
Order Designation	GDMX1AX-AOU	GDM21AX-XXX
		

Description	Valve connector GDM series, type A, female connector, field attachable	
RoHS-Compliant (2011/65/EU)	Yes	
(Construction Type) Standard	DIN EN 175301-803-A	
Approvals	UL, VDE, SEV, CSA	
Connectible Cables	M16 x 1.5/PG9: Ø 6 to 8 mm; M20 x 1.5/PG11: Ø 8 to 10 mm; 1/2" NPTF/G1/2" ISO: Ø 8 to 10 mm	
Conductor Size	0.25 x 1.5 mm ²	

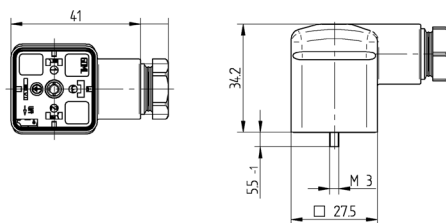
Technical Data		
No. of Pins	2 + PE, 3 + PE	2 + PE
Ambient Temperature	-40 °C to +125 °C, notice derating	-25 °C to +90 °C, notice derating
Housing/Grip/Screw Coupling		PA 66
Contact Holder		PA
Contact		CuZn
Central Screw		4.8, Fe/Zn B
O-Ring Material		SBR/NBR
Flammability Class		UL 94 5VA

Mechanical Data		
Degree of Protection	IP67 (only when mated with Hirschmann/Lumberg counterparts)	
Terminal Type	Screw	

Electrical Data		
Circuit	None	Varistor, recovery diode with/without bridge rectifier
Contact Resistance	≤ 4 mΩ	
Rated Voltage	300 AC/DC UL-CSA	24 V AC/DC, 120 V AC/DC, 230 V AC/DC, 230 V DC
Rated Current	10 A	10 A, 1 A (with bridge rectifier)
Pollution Degree	3	

Accessories	
Scope of Delivery or Accessories (incl.)	Central screw
Accessories to be Ordered Separately	Gasket: 735-677-003, NBR, Temp. range: -25 °C to +90 °C, captive gasket GDMF-6 NBR, black 735-677-004, EPDM, Temp. range: -25 °C to +120 °C, captive gasket GDMF-6 EPDM, brown 730-801-002, NBR, Temp. range: -30 °C to +90 °C, flat gasket GDM 3-7, brown 731-739-004, EPDM, Temp. range: -40 °C to +125 °C, flat gasket GDM 3-21, brown 731-531-002, NBR, Temp. range: -30 °C to +90 °C, profiled gasket GDM 3-16, black 735-823-002, EPDM Temp. range: -40 °C to +125 °C, profiled gasket GDM 3-24, brown Central screw: 732488002, knurled screw (gray), GDM 3011-7 734363001, stainless steel screw, GDM 3011 RF-1 735507002, torx screw, GDM 3011-18

Technical Drawing



Additional options available upon request.

Be Certain with Belden

Circuit Diagram

P-Code: V1	P-Code: V3	P-Code: D1	P-Code: D3	P-Code: A0U
				 K1 + ◯ ———— < 1 + K2 - ◯ ———— < 2 - K3 + ◯ ———— < 3 + ⊕ ◯ ———— < ⊕

Order Information

Order Designation	No. of Pins	Circuit	Cable Gland	Rated Voltage	Rated Current	Characteristics
GDM21AN-A0U-10F	2 + PE	-	PG11 + strain relief	300 V AC/DC	10 A	
GDM21AJ-A0U-10F	2 + PE	-	M16 + strain relief	300 V AC/DC	10 A	
GDM21AJ-V1U-10D	2 + PE	Varistor	M16 + strain relief	230 V AC/DC	10 A	
GDM21AJ-V3U-10D	2 + PE	Varistor, bridge rectifier	M16 + strain relief	230 V AC/DC	1 A	
GDM21AQ-A0U	2 + PE	-	1/2 NPTF +Strain Relief	300 V AC/DC	10 A	
GDM31AL-A0U	3 + PE	-	PG9 +Strain Relief	300 V AC/DC	10 A	
GDM31AN-A0U	3 + PE	-	PG11 +Strain Relief	300 V AC/DC	10 A	
GDM31AQ-A0U	3 + PE	-	1/2 NPTF +Strain Relief	300 V AC/DC	10 A	