



Series 354000 DIP-to-SOIC Adapter

FEATURES

- Convenient, cost-effective means of converting DIP-to-SOIC PC board layouts.

GENERAL SPECIFICATIONS

- SOCKET BODY: black, UL 94V-0 glass-filled 4/6 Nylon 170°C continuous use temp
- PCB: FR-4, 0.062 [1.58] thick
- MALE ADAPTER PIN: Brass 360 1/2-hard per UNS C36000, ASTM B16/B16M
- MALE PIN PLATING: 200μ [5.08μ] Sn/Pb 93/7 per ASTM B579-73 over 100μ [2.54μ] Ni per SAE AMS-QQ-N-290
- FEMALE CONTACT PIN: Brass 360 1/2-hard per UNS C36000, ASTM B16/B16M
- FEMALE PIN PLATING: 10μ [0.254μ] Au per MIL-G-45204 over 100μ [2.54μ] Ni per SAE AMS-QQ-N-290
- 4-FINGER COLLET CONTACT: BeCu per UNS C17200, ASTM B194-08
- FEMALE CONTACT PLATING: 10μ [0.254μ] Au per MIL-G-45204 over 50μ [1.27μ] Ni per SAE AMS-QQ-N-290
- CONTACT CURRENT RATING: 3 amps
- OPERATING TEMPERATURE: 221°F [105°C]
- INSERTION FORCE: 180g/pin; based on a 0.018 [0.46] dia. test lead
- WITHDRAWAL FORCE: 90g/pin; based on a 0.018 [0.46] dia. test lead
- NORMAL FORCE: 140g/pin; based on a 0.018 [0.46] dia. test lead
- SOCKET ACCEPTS LEADS: 0.015-0.025 [0.38-0.64] in dia., 0.100-0.125 [2.54-3.18] long

MOUNTING CONSIDERATIONS

- SUGGESTED PCB SOLDER PAD SIZE: 0.028 [0.71] min. width



CUSTOMIZATION: In addition to the standard products shown on this page, Aries specializes in custom design and production. Special materials, platings, sizes, and configurations can be furnished, depending on the quantity. **NOTE:** Aries reserves the right to change product general specifications without notice.

ORDERING INFORMATION

XX-354000-X 0

Pins ———— 8, 14, 16, 20, 24, 28
 Series ————
 Adapter Pin Options ————
 (see P/N Suffix Table)
 1 = Short Adapter Pin
 2 = Long Adapter Pin
 Plating Sn/Pb

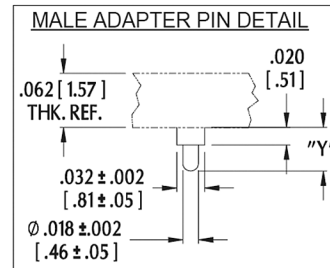
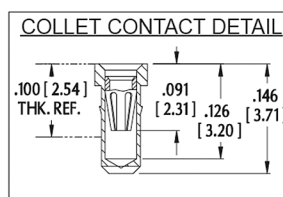
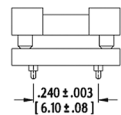
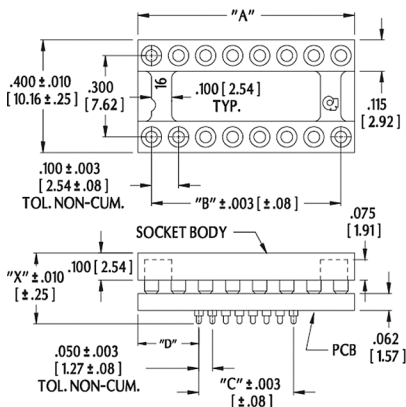
| P/N Suffix | Dim. "X" | Dim. "Y" |
|------------|---------------|--------------|
| -10 | 0.265 [16.73] | 0.050 [1.27] |
| -20 | 0.325 [8.26] | 0.110 [2.79] |

ALL DIMENSIONS: INCHES [MILLIMETERS]

ALL TOLERANCES: ±0.005 [0.13] UNLESS OTHERWISE SPECIFIED

CONSULT FACTORY FOR OTHER SIZES AND CONFIGURATIONS

| Pins | Dim. "A" | Dim. "B" | Dim. "C" | Dim. "D" |
|------|---------------|---------------|---------------|---------------|
| 8 | 0.400 [10.16] | 0.400 [10.16] | 0.100 [2.54] | 0.125 [3.175] |
| 14 | 0.700 [17.78] | 0.600 [15.24] | 0.300 [7.62] | 0.225 [5.72] |
| 16 | 0.800 [20.32] | 0.700 [17.78] | 0.350 [8.89] | 0.225 [5.72] |
| 20 | 1.000 [25.40] | 0.900 [22.86] | 0.450 [11.43] | 0.275 [6.99] |
| 24 | 1.200 [30.48] | 1.100 [27.94] | 0.550 [13.97] | 0.325 [8.26] |
| 28 | 1.400 [35.56] | 1.300 [33.02] | 0.650 [16.51] | 0.375 [9.53] |



Bristol, PA 19007-6810 USA
 TEL (215) 781-9956 • FAX (215) 781-9845
 WWW.ARIESELEC.COM • INFO@ARIESELEC.COM