

SURFBOARDS®



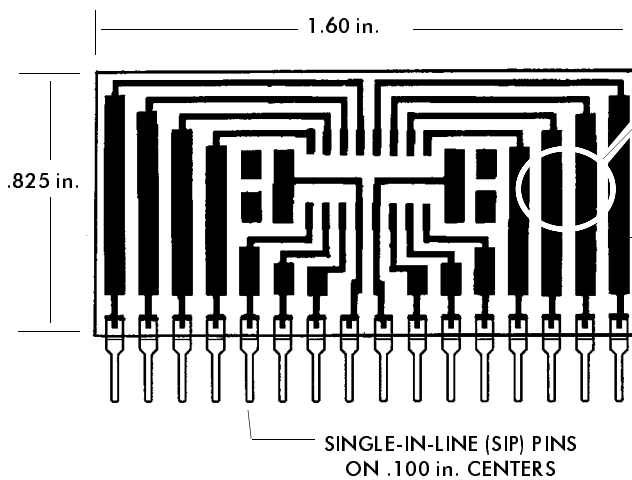
THE BREADBOARDING MEDIUM FOR SURFACE MOUNT™

9000 SERIES FOR I.C.s

IDS9164A 3-9-99

MODEL **9164**

ACCEPTS ONE 14 OR 16-PIN S.O.I.C.
OR TWO 8-PIN SOICs
DIRECT PIN OUT OR ADD ADDITIONAL COMPONENTS

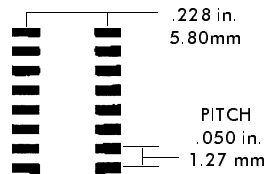


I.C. pins fan out to peripheral part mounting areas capable of accepting several surface mount devices



0805, 1206 STRADDLE

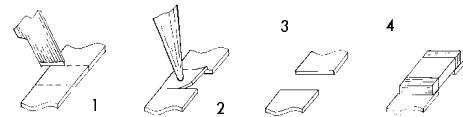
I.C. FOOTPRINT accepts one 14 or 16-pin SOIC, or two 8-pin SOICs.



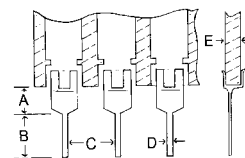
FOIL MODIFICATIONS EXPAND VERSATILITY

Typical of many Surfboards are large pad areas which may be modified to create additional part mounting zones or expand layout or connection options.

- 1: Score foil with sharp razor to define new zone.
- 2: Apply heat with iron to delaminate foil section.
- 3: New mounting zone has been created.
- 4: Solder component to new mounting zone.



PIN SPECIFICATIONS / TOLERANCES



In Inches	
A =	.062 ± .006
B =	.130 ± .010
C =	.100 ± .005
D =	.020 ± .004
E =	.031 ± .005

Direct pin-out of each I.C. line is provided. If desired, 0805, and 1206 devices may be mounted across line. Use foil modifications (see right) to create new mounting zones or modify circuit layout. Completed prototype circuit on 16 pin SIP can be plugged into both sockets or solderless breadboards, or may be soldered into conventional breadboards.

JUST ADD PARTS AND PLUG IN™

BOARD SPECIFICATIONS

- BOARD MATERIAL:** .031 ± .005 In. Thick G-10 FR-4 Glass Epoxy or equivalent.
- CIRCUITS:** 1oz Copper with solder coated pads.
- TOLERANCES:** Given in inches
 - Board Size ± .020 / OAL ± .040
 - Circuit pattern/position ± .005

Copyright 1997, 1999 by Capital Advanced Technologies, Inc. All rights reserved. Surfboards Are a registered trademark of Capital Advanced technologies, Inc. All other trademarks or registered trademarks are property of their respective owners. Availability, specifications, and prices are subject to change without notice. All information given is believed to be accurate but is not guaranteed. The user of information given or products represented by such information is responsible for determining the suitability of said information or products for a given purpose.

CAPITAL ADVANCED TECHNOLOGIES, INC.

CAROL STREAM, ILLINOIS. USA.

PHONE 630-690-1696 WWW.CapitalAdvanced.Com FAX-ON-DEMAND 630-690-2865