

REV.	DATE	ECR NO	DESCRIPTION
A	11/24/10	--	RELEASE TO MFG.

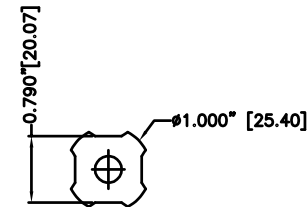
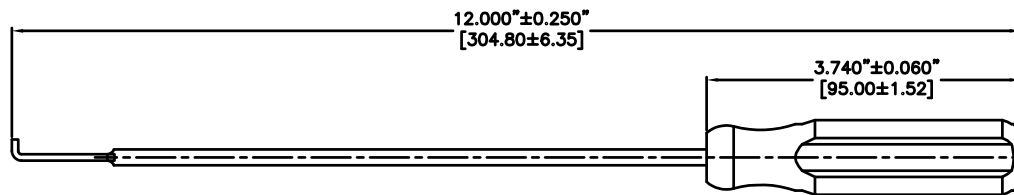
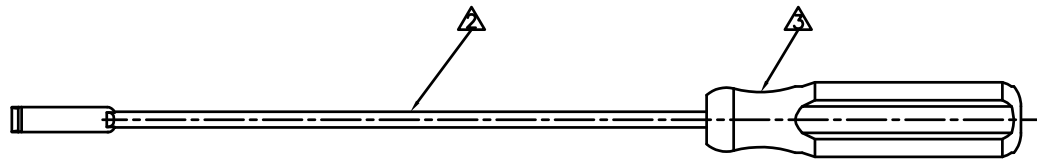
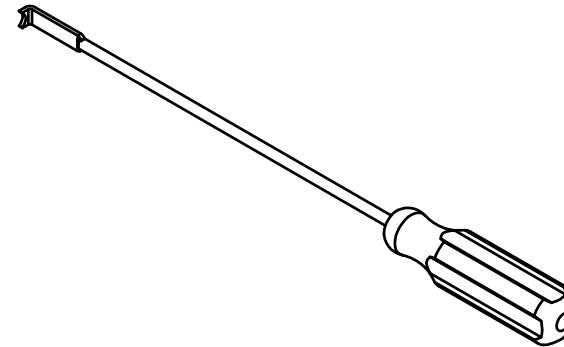
NOTES: UNLESS OTHERWISE SPECIFIED

1. PARTS TO BE FREE OF BURRS AND SHARP EDGES.

⚠ METAL COMPONENTS TO BE CLEAR ZINC PLATED.

⚠ HANDLE TO BE TRANSLUCENT RED PLASTIC.

4. DIMENSIONS IN [] ARE IN MILLIMETERS.



DESCRIPTION	MATERIAL	FINISH	QTY	UNLESS OTHERWISE SPECIFIED DIMENSIONS ARE IN INCHES. DIMENSIONS IN [] ARE IN MILLIMETERS AND FOR CUSTOMER REFERENCE ONLY.	APPROVALS	DATE	Amphenol Connex			
				UNLESS OTHERWISE SPECIFIED TOLERANCES FOR MILLIMETERS ARE: 0.5 - 8mm ± 0.20mm 8 - 30mm ± 0.40mm 30 - 120mm ± 0.50mm	DRAWN CLEMENT	11/24/10	PART DESCRIPTION 1.0/2.3 REMOVAL TOOL			
				UNLESS OTHERWISE SPECIFIED TOLERANCES FOR INCHES ARE: .020 - .315 = ± 0.007" .315 - 1.180 = ± 0.015" 1.180 - 4.724 = ± 0.020"	CHECKED		PART NO. 47019			
				DO NOT SCALE DRAWING	ISSUED		DWG. NO. 47019.DWG			
					SHEET 1 OF 1		REV. A			
					CAD FILE C:/470/47019.DWG		SIZE A			
							SCALE NA			