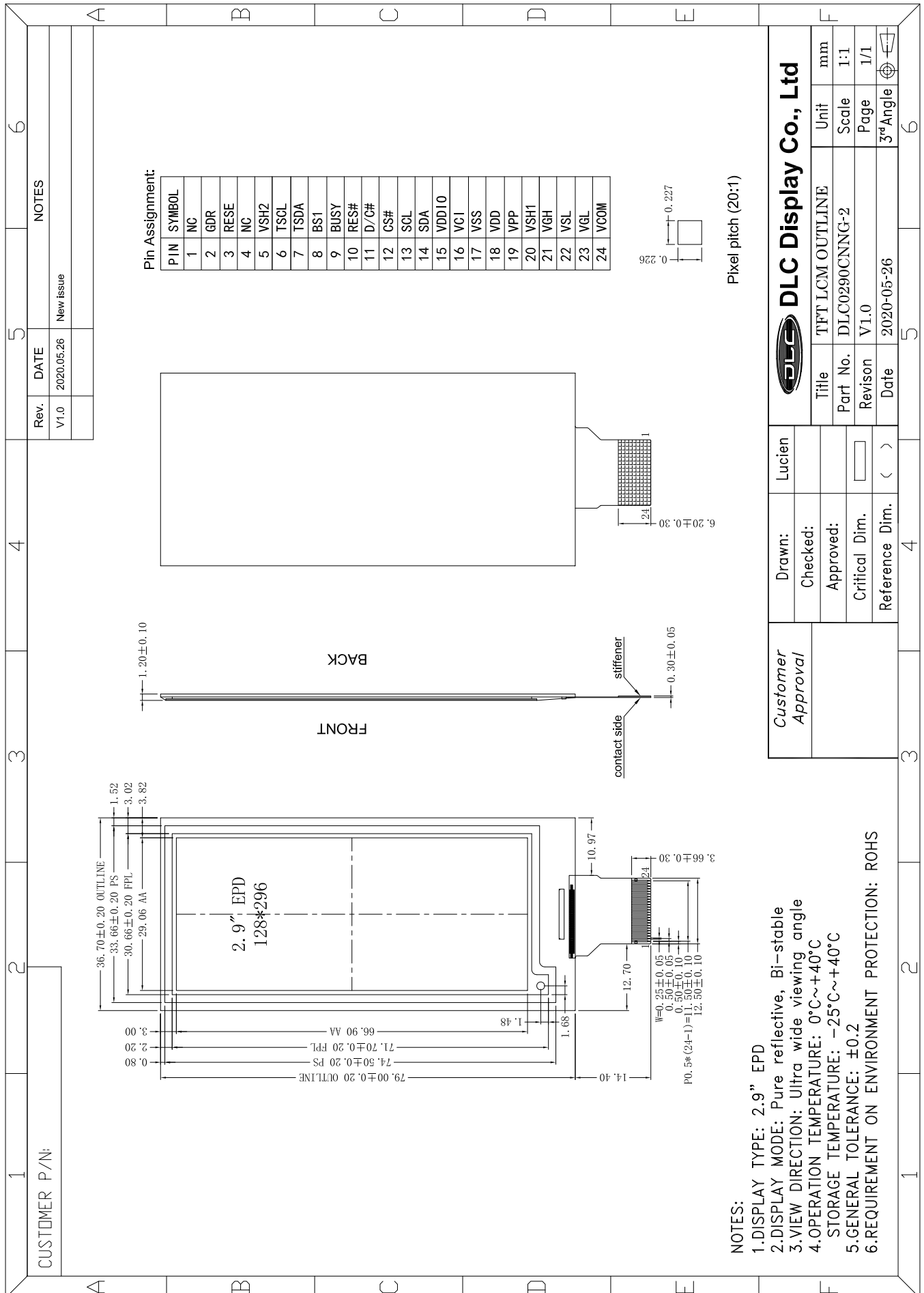


Outline Drawing



NOTES:

- 1.DISPLAY TYPE: 2.9" EPD
- 2.DISPLAY MODE: Pure reflective, Bi-stable
- 3.VIEW DIRECTION: Ultra wide viewing angle
- 4.OPERATION TEMPERATURE: 0°C~+40°C
STORAGE TEMPERATURE: -25°C~+40°C
- 5.GENERAL TOLERANCE: ±0.2
- 6.REQUIREMENT ON ENVIRONMENT PROTECTION: ROHS

Customer Approval	Drawn:	Lucien	DLC Display Co., Ltd	Title	TFT LCM OUTLINE	Unit	mm
	Checked:			Part No.	DLC0290CNNG-2	Scale	1:1
	Approved:			Revision	V1.0	Page	1/1
	Critical Dim.			Date	2020-05-26	3rd Angle	
Reference Dim.	< >						