

SURFBOARDS®



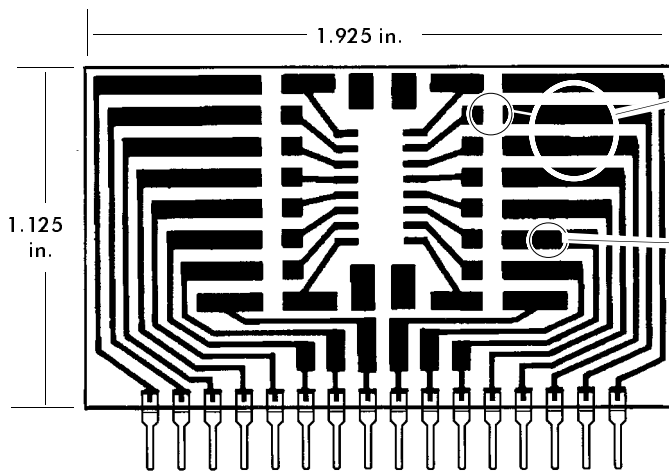
THE BREADBOARDING MEDIUM FOR SURFACE MOUNT™

9000 SERIES FOR I.C.s

IDS9165A 3-9-99

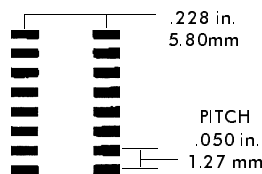
MODEL **9165**

ACCEPTS ONE 14 OR 16-PIN S.O.I.C.
OR TWO 8-PIN SOICs



SINGLE-IN-LINE (SIP) PINS
ON .100 in. CENTERS

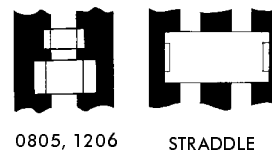
I.C. FOOTPRINT
accepts one 14 or
16-pin SOIC,
or two 8-pin SOICs.



9165 PROVIDES LARGE BREADBOARDING AREA

Each I.C. pin out is provided with an in line part mounting zone capable of accepting 0805, 1206, Mini-Melf and other component sizes in that range. Large circuit foils provide additional areas for more components or reconfiguration of board by making foil modifications (see right) or by adding jumpers. Finished board becomes 16 pin sip module.

JUST ADD PARTS AND PLUG IN (TM)



0805, 1206

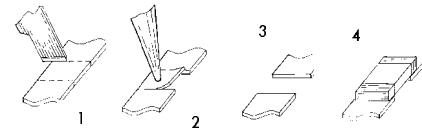
STRADDLE

I.C. pins fan out to peripheral part mounting areas capable of accepting several surface mount devices

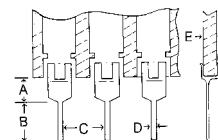
FOIL MODIFICATIONS EXPAND VERSATILITY

Typical of many Surfboards are large pad areas which may be modified to create additional part mounting zones or expand layout or connection options.

- 1: Score foil with sharp razor to define new zone.
- 2: Apply heat with iron to delaminate foil section.
- 3: New mounting zone has been created.
- 4: Solder component to new mounting zone.



PIN SPECIFICATIONS / TOLERANCES



	In Inches
A=	.062 ± .006
B=	.130 ± .010
C=	.100 ± .005
D=	.020 ± .004
E=	.031 ± .005

BOARD SPECIFICATIONS

BOARD MATERIAL: .031±.005 In. Thick G-10 FR-4 Glass Epoxy or equivalent.

CIRCUITS: 1 oz Copper with solder coated pads.

TOLERANCES: Given in inches

Board Size ± .020 / OAL ± .040

Circuit pattern/position ± .005

Copyright 1997, 1999 by Capital Advanced Technologies, Inc. All rights reserved. Surfboards Are a registered trademark of Capital Advanced technologies, Inc. All other trademarks or registered trademarks are property of their respective owners. Availability, specifications, and prices are subject to change without notice. All information given is believed to be accurate but is not guaranteed. The user of information given or products represented by such information is responsible for determining the suitability of said information or products for a given purpose.

CAPITAL ADVANCED TECHNOLOGIES, INC.

CAROL STREAM, ILLINOIS. USA.

PHONE 630-690-1696 WWW.CapitalAdvanced.Com FAX-ON-DEMAND 630-690-2865