

## Han Yellock Adapter Frame Han-Modular 60

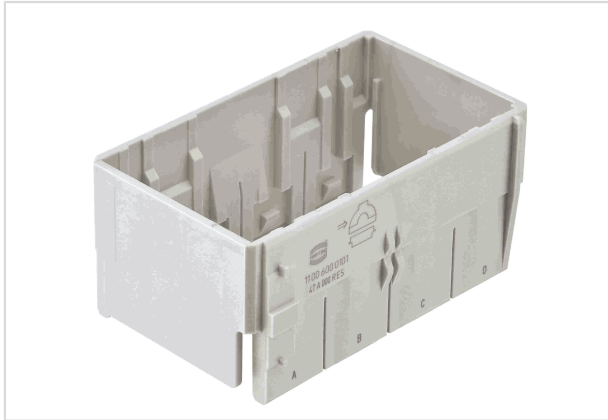


Image is for illustration purposes only. Please refer to product description.

Part number	11 00 600 0101
Specification	Han Yellock Adapter Frame Han-Modular 60
HARTING eCatalogue	<a href="https://b2b.harting.com/11006000101">https://b2b.harting.com/11006000101</a>

### Identification

Category	Accessories
Series	Han-Yellock®
Type of accessory	Adapter frames
Description of the accessory	for carrier hoods for Han-Yellock® 60

### Material properties

Material (accessories)	Polycarbonate (PC)
Colour (accessories)	RAL 7032 (pebble grey)
Material flammability class acc. to UL 94	V-0
RoHS	compliant
ELV status	compliant
China RoHS	e
REACH Annex XVII substances	Not contained
REACH ANNEX XIV substances	Not contained
REACH SVHC substances	Not contained
Fire protection on railway vehicles	EN 45545-2 (2020-08)
Requirement set with Hazard Levels	R22 (HL 1-3) R23 (HL 1-3)

### Specifications and approvals

Specifications	IEC 60664-1 IEC 61984
----------------	--------------------------



**Pushing Performance**  
Since 1945

## Specifications and approvals

Approvals DNV GL

---

## Commercial data

Packaging size	1
Net weight	13.12 g
Country of origin	Germany
European customs tariff number	85389099
GTIN	5713140109247
eCl@ss	27440210 Fixing element for industrial connectors

---