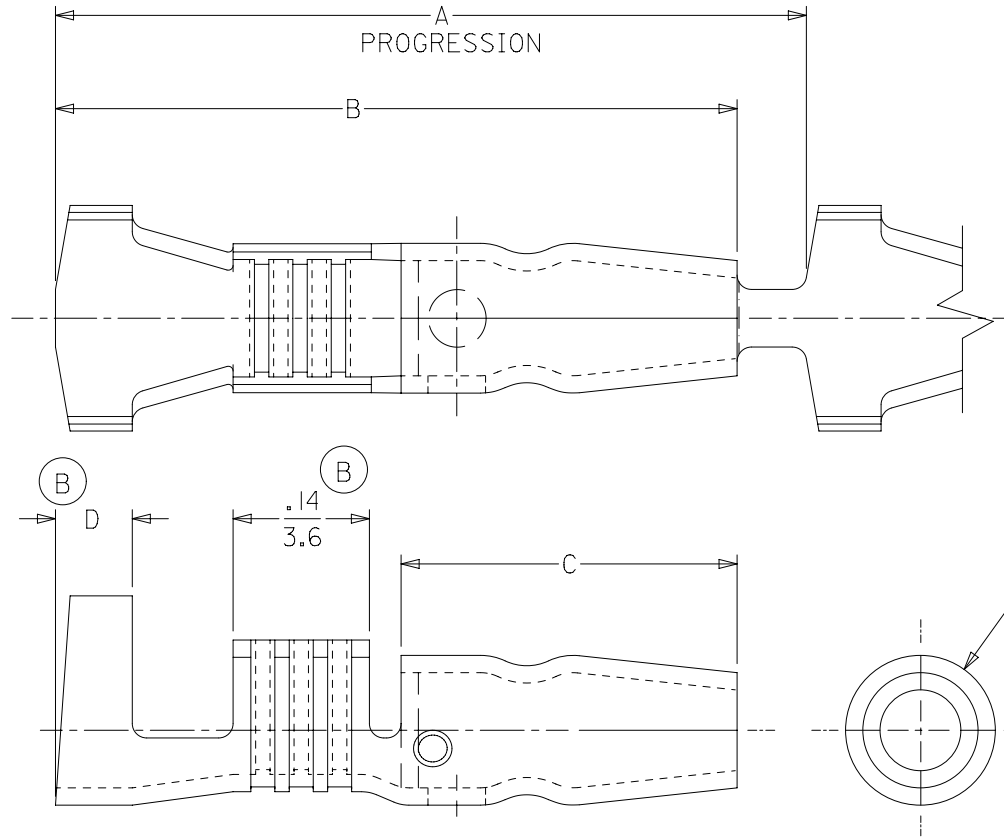


MATERIAL NUMBER	ENG. NUMBER	DESCRIPTION	FITS RECEPT. DIAMETER.	A	B	C	D	E
197244102	19724-4102	PLATED	.156/(3.96)	.76/(19.3)	.71/(18.0)	.35/(8.9)	.08/(2.0)	.156/(3.96)
197244402	19724-4402	PLATED	.180/(4.57)	.83/(21.2)	.74/(18.8)	.44/(11.2)	.06/(1.5)	.180/(4.57)



SALES DRAWING

NOTE(S):

- MATERIAL: BRASS
- MATERIAL THICKNESS: .016/(0.41)
- PLATING: ELECTRO-TIN

THIS DRAWING CONTAINS INFORMATION THAT IS PROPRIETARY TO MOLEX ELECTRONIC TECHNOLOGIES, LLC AND SHOULD NOT BE USED WITHOUT WRITTEN PERMISSION

DIMENSION UNITS IN/MM		SCALE 5:1		CURRENT REV DESC: OBSOLETE PART NO		molex				
GENERAL TOLERANCES (UNLESS SPECIFIED)				EC NO: 628886					VIBRAKRIMP SNAP PLUG	
		MM	INCH	DRWN: VLOKESHA		18-14 AWG, OPEN BARREL CHAIN STAMPED				
4 PLACES		± 0.0	±	2019/10/10						
3 PLACES		±	± 0.005	CHK'D: GGA		2020/01/13				
2 PLACES		± 0.13	± 0.01	APPR: GGA		2020/01/13				
1 PLACE		± 0.25	±	INITIAL REVISION:		PRODUCT CUSTOMER DRAWING				
0 PLACES		±	±	DRWN: DLM		DOCUMENT NUMBER		DOC TYPE	DOC PART	REVISION
ANGULAR TOL		± 0.5°		APPR: RWD		SD-19724-002		PSD	001	B1
DRAFT WHERE APPLICABLE MUST REMAIN WITHIN DIMENSIONS		THIRD ANGLE PROJECTION		DRAWING	SERIES	MATERIAL NUMBER	CUSTOMER	SHEET NUMBER		
				A-SIZE	19724	SEE CHART	GENERAL MARKET	1 OF 1		

DOCUMENT STATUS	P1	RELEASE DATE	2020/01/13	05:55:47
-----------------	----	--------------	------------	----------